



Cobra
CABLE MANAGEMENT LTD

Product Catalogue

www.cobracable.co.uk

► Listed in Luckins



Tying up the loose ends

Introduction

Cobra Cable Management Ltd is a newly formed company, based in the Midlands, with a management team that has over 35 years' experience dealing exclusively with the electrical wholesale industry. The company is ideally placed to understand, and meet, the challenges faced by either Independent, Regional or National Wholesale organisations.

All products within the ranges are manufactured under stringent QA systems and include a comprehensive range of consumable products needed by the electrical contracting and installation industry on a daily basis. The company is committed to rapidly expanding the product range offered to meet the industry's ever changing needs.

The company places great importance on using its experience to work closely with its wholesale customers to ensure they achieve improved profitability and efficiency, and at the same time reduce stock levels so improving stock turns.

“Cobra Cable Management Ltd is dedicated to offering outstanding service levels exclusively to the electrical wholesale industry and supplying high quality consumable products which are always readily available and supplied at the right price.”

Shop Online!

Visit our website to see our full range of products

www.cobracable.co.uk



Contents

Bulk Discount Prices	4	316 Grade Stainless Steel Lugs	33	Through Box	50	Pozi, Hex & Pan Drill Screw	
Hottest Products	5	Solid Copper Lugs and Butt Splices	34, 35	U-Box	50	Shallow Head	62
Nylon Cable Ties	6	Crimping Tools	35	Back Outlet Box	51	Washers (Penny, Steel & Square)	63
Cable Tie Fixings	7	Sleeving	36	Distance Saddle	51	Shakeproof Washer - BZP	63
Cable Tie - Self Adhesive Square Bases	7	Soft Skin / Fire Clips	37	Terminal with Back Outlet	51	Engineering Set Screws	64
Cable Tie - Cable Mounts	7	Fire Retardant Clips and Fixings	38	Twin Through Box	51	Serrated Flange Nuts	64
Cable Tie - Fixing Bolt	7	Metal Wall Plugs	38	Y Box	51	Nuts	64
Cable Cleats	7	Steel Space Bar Saddles Coated	38	Box Lid Cover	52	Concrete Screw - BZP	64
Knock In Metal Clips	7	Fire Retardant Clips and Fixings	38	Galvanised Lock Nut	52	Channel Nuts - BZP	65
Stainless Steel Cable Ties and Fixings	8	SWA BW Industrial Glands	39	Lock Ring	52	Hex Set Screw - Brass	65
Stainless Steel Fixing Kits	8	SWA CW Industrial Glands	39	Nipple	52	Full Nut - Brass	65
Cable Tie Tools	8	TRS Glands	39	Reducer	52	Washer - Brass	65
Metal Round Cable Clips	9	Brass Earthing Nut	39	Galv Coupler	53	Shield Bolts - Loose Type	66
Plastic Flat Cable Clips Twin & Earth	9	Hex Key Wrench for Earth Nuts	39	Inspection Bend & Elbow	53	Shield Bolts - Eyelet Type	66
Plastic Round Cable Clips	9	Earth Rod and Accessories	40	Inspection Tee	53	Shield Bolts - Projector Type	66
Nylon Dome - Top Glands	10	Earth Clamps	40	Rod Connectors	53	Wedge Drop - In Anchor ZY	66
Meter Tail Gland Kits	10	Lattice Earth Mat	40	Catenary Wire and Accessories	54	Setting Tool BZP	66
CobraTubs	11	Female Bush	41	Jack Chain	54	Wire Hanger ZY	66
ALL Round Banding	12	Large Male Bush	41	Terminal Strips	55	Folded Eye Bolt - BZP	67
Switch and Socket Boxes	12	Short Male Bush	41	Lever Connectors	55	Wedge Nut	67
Fire Putty Boxes	12	Brass Locknut	41	Lever Connectors Quick Connection	55	Draw Tape	67
Box Mounting Brackets (Telescopic)	12	Plain Earth Bar	42	Push In Connectors	55	Cable Pull Lubricant Wax Based	67
Metal Clad Boxes	13	Earth Bar and Disconnection Links	43	Push Wire & Lever Connector Kit	55	Threaded Rod End Cap	
Dry Lining Boxes	13	Cable Hanger / Cable Run Clip	44	Connector Box with Fittings (Choc Box)	56	Flex PVC	68
Rotary Isolators	14	Cable Run Adapter	44	Porcelain Connectors	56	Stand Off Bracket	68
DC Rotary Isolators (Solar)	15	Purlin Clip	44	Terminal Earth Blocks	56	Top Hat Bracket	68
Solar Branch Connector	15	Ceiling Clip	45	Earth Terminals	56	Bossed Back Plate	68
Crimping Tool	15	Dovetail Cable Hanger	45	Insulated Connection Boxes	56	Beam Clamps Galv	68
Solar Connector Spanner	15	Girder Clip	45	PVC Insulation Tape	57	SF Foot Rubber	69
Solar Warning Labels	15	Light Hanger	45	Self-Amalgamating Tape	57	H - Frame Kit	69
Speed Fix	16	Rod Hanger	45	Underground Warning Tape	57	Cantilever Arm - Galv	69
Speed Fix Coupler	16	Fibreglass Step Ladder Treads	46	Gaffer / Duct Tape	57	Channel End Caps	69
Wall Socket	16	Ladder Clamp	46	Galvanised Spray	58	Holesaws	70
Splitter	16	Conduit Bender & Accessories	47	Line Markers	58	Arbours	70
Panel Mounts	17	Metal Cutting Compound Stock & Die Sets	47	Grommets	58	Auger Wood Bit SDS Shank	70
Interlocking Switch	17	Adaptors - Brass Nickel Plated - Fixed and Swivel	48	Grommet Strip	58	Auger Wood Bit - Hex Shank	71
IP67 Plug Range Red and Blue	17	Contractor Packs - PVC	48	Roofing Bolts & Nuts	59	Masonry Drill Bit	71
IP67 Connector Range	17	Flexible Conduit - Galvanised - PVC Coated	48	Combi Tray Bolt	59	SDS Drill Bit	72
Outdoor Switched Sockets	18	Steel Flexible Conduit - Galvanised	48	Plasterboard Fixings	59	Flat Wood Bit	73
Weatherproof Switches	18	Adaptable Boxes - Galvanised Steel	49	Spring Toggle	59	Warning Labels	74
Weatherproof Empty Enclosures	18	Adaptable Boxes - PVC	49	Cable Guard	60	Scaffold & Ladder Tags	74
Weatherproof Fused Spur Switch	18	Duogel	49	Cable Spooler	60	Multi-Purpose Wipes	75
Weatherproof RCD Switch	18	Testers	49	PVC - U Conduit Solvent Cement	60	Rubble Sacks	75
Insulated Terminals	19, 20, 21	Angle Box	50	Lockout Essential Kit	60	Dust Sheets	75
Hydraulic Crimping Tools	22, 23, 24, 25	Intersection Box	50	Cable Protector	60	Cable Jacks	75
Solid Copper Lug 90 Degree Bend	26, 27	Tee Box	50	Channel Drive Over Cable Protector	60	Gripbond / Saves Nails	76
Solid Copper Lug 45 Degree Bend	28, 29	Terminal Box	50	Conduit Box Screws, Nuts and Washers - Brass	61	Pro Multi-use Silicone	76
Contained Palm Lugs	30, 31			3.5mm Socket Screws & Extension Stud	61	Flexible Fillers	76
2 Hole Cable Lugs 16mm Hole Centres	31			Capping / Washered Nails	61	Super Glues	76
Brazed 4-Hole Cable Lugs (Transformer)	32			Pozi Countersunk Woodscrew - Twinthread - BZP	62	Silicone Sealants	77
				Wall Plugs	62	Expanding Foam	77
						Fire Rated Silicone	77
						Lightweight Fillers	77

1% Online Discount



www.cobracable.co.uk - Order now with the QR code

1% Online Discount



www.cobracable.co.uk - Order now with the QR code



6 Tread
ST/6TREAD/1
(Page 46)



CobraTub
TUB/CT1
(Page 11)



3 Pole
PC/LC/3POLE/W221
(Page 55)



Metal Clad Socket
MC/2G/DP
(Page 13)



Woodscrew
FX/WS/08150
(Page 62)



Meter Tail Gland Kits
GL/DT/32/MTK/L
(Page 10)



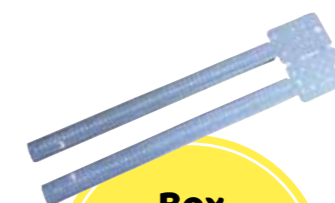
Pyro Clips
P/RCHL32/50
(Page 37)



Twin & Earth
CC/N/F/1.0
(Page 9)



Rotary Isolator
RI/32
(Page 14)



Box Mounting Bracket
FX/TBM/24/1
(Page 12)



SF Foot Rubber
RM/250/1
(Page 69)



Visit our website to see
our full range of products
www.cobracable.co.uk

Other lengths and widths available to special order

Cable Tie - Nylon 66 - Self Locking

- Made from Nylon 66
- LSF material
- Heat resistant
- Acid and corrosion resistant
- Operational temp - 35°C to 85°C
- UL approved to 94V-2

Part Number	Description	Colour	Pack Qty
CT/2.5/100/B	2.5mm wide x 100mm long	Black	100
CT/2.5/100/N	2.5mm wide x 100mm long	Natural	100
CT/2.5/140/B	2.5mm wide x 140mm long	Black	100
CT/2.5/140/N	2.5mm wide x 140mm long	Natural	100
CT/2.5/200/B	2.5mm wide x 200mm long	Black	100
CT/2.5/200/N	2.5mm wide x 200mm long	Natural	100
CT/2.5/200/R	2.5mm wide x 200mm long	Red	100
CT/3.5/150/B	3.5mm wide x 150mm long	Black	100
CT/3.5/150/N	3.5mm wide x 150mm long	Natural	100
CT/3.5/200/B	3.5mm wide x 200mm long	Black	100
CT/3.5/200/N	3.5mm wide x 200mm long	Natural	100
CT/4.5/200/B	4.5mm wide x 200mm long	Black	100
CT/4.5/200/N	4.5mm wide x 200mm long	Natural	100
CT/4.5/200/R	4.5mm wide x 200mm long	Red	100
CT/4.5/200/BL	4.5mm wide x 200mm long	Blue	100
CT/4.5/200/Y	4.5mm wide x 200mm long	Yellow	100
CT/4.5/200/BR	4.5mm wide x 200mm long	Brown	100
CT/4.5/200/GR	4.5mm wide x 200mm long	Green	100
CT/4.5/250/B	4.5mm wide x 250mm long	Black	100
CT/4.5/250/N	4.5mm wide x 250mm long	Natural	100
CT/4.5/300/B	4.5mm wide x 300mm long	Black	100
CT/4.5/300/N	4.5mm wide x 300mm long	Natural	100
CT/4.5/300/R	4.5mm wide x 300mm long	Red	100
CT/4.5/300/G	4.5mm wide x 300mm long	Grey	100
CT/4.8/380/B	4.8mm wide x 380mm long	Black	100
CT/4.8/380/N	4.8mm wide x 380mm long	Natural	100
CT/4.8/550/B	4.8mm wide x 550mm long	Black	100
CT/7.5/300/B	7.5mm wide x 300mm long	Black	100
CT/7.5/370/B	7.5mm wide x 370mm long	Black	100
CT/7.5/370/N	7.5mm wide x 370mm long	Natural	100
CT/7.5/500/B	7.5mm wide x 500mm long	Black	100
CT/7.5/720/B	7.5mm wide x 720mm long	Black	100
CT/9/450/B	9.0mm wide x 450mm long	Black	100

TOP SELLER!
See Bulk Discounts on Page 4

TOP SELLER!
See Bulk Discounts on Page 4

POPULAR PRODUCT!

TOP SELLER!

Cable Tie - Self Adhesive Square Bases

- Self adhesive base
- Larger size with 5.4mm fixing hole
- UL approved to 94V-2

Part Number	Description	Colour	Pack Qty
CT/CM/19X19/B	19mm x 19mm 4 way	Black	100
CT/CM/19X19/N	19mm x 19mm 4 way	Natural	100
CT/CM/28X28/B	28mm x 28mm 4 way	Black	100
CT/CM/28X28/N	28mm x 28mm 4 way	Natural	100

Cable Tie - Cable Mounts

- Made from Nylon 66
- For cable ties up to 9.3mm wide
- Operating temp - 35°C to + 85°C
- Acid and corrosion resistant
- UV resistant

Part Number	Description	Colour	Pack Qty
CT/CR/B	23 x 10m with 5mm fixing hole	Black	100
CT/CR/N	23 x 10m with 5mm fixing hole	Natural	100

Cable Tie - Fixing Bolt

- Fixing bolts designed to be used without screws or plugs
- Accepts cable ties up to 9mm wide
- Made from PA material

Part Number	Description	Colour	Pack Qty
CT/FB/6MM/B	6mm	Black	100
CT/FB/6MM/N	6mm	Natural	100

- Made from high grade Polyethylene
- UV resistant
- Single hole fixing for speed of installation
- Black

Part Number	Description	Colour	Pack Qty
CL/C4/BLACK	Number 4 Cable Cleat - Single Hole	Black	100
CL/C5/BLACK	Number 5 Cable Cleat - Single Hole	Black	100
CL/C6/BLACK	Number 6 Cable Cleat - Single Hole	Black	100
CL/C7/BLACK	Number 7 Cable Cleat - Single Hole	Black	100
CL/C8/BLACK	Number 8 Cable Cleat - Single Hole	Black	100
CL/C9/BLACK	Number 9 Cable Cleat - Single Hole	Black	100
CL/C10/BLACK	Number 10 Cable Cleat - Single Hole	Black	100
CL/C11/BLACK	Number 11 Cable Cleat - Single Hole	Black	50
CL/C12/BLACK	Number 12 Cable Cleat - Single Hole	Black	50
CL/C14/BLACK	Number 14 Cable Cleat - Single Hole	Black	50
CL/C15/BLACK	Number 15 Cable Cleat - Single Hole	Black	50
CL/C16/BLACK	Number 16 Cable Cleat - Single Hole	Black	50

Part Number	Description	Colour	Pack Qty
KI/MC/69/R	Knock In Metal Clips To Suit 6-9mm	Red	50
KI/MC/69/B	Knock In Metal Clips To Suit 6-9mm	Black	50
KI/MC/69/W	Knock In Metal Clips To Suit 6-9mm	White	50



Cable Cleats



Knock In Metal Clips



1% Online Discount

www.cobracable.co.uk - Order now with the QR code

1% Online Discount

www.cobracable.co.uk - Order now with the QR code

Ordering made easy!

Scan the QR code opposite and order online from our full range of products

SCAN QR CODE >>



Stainless Steel Cable Ties and Fixings



- Stainless Steel, roller lock type ties - 100 per pack
- Ties in Black, Natural & Red LSZH coating

Part Number	Description	Colour	Pack Qty
CT/SS/4.6/100	Stainless Steel Ties 4.6mm x 100mm	Self Colour	100
CT/SS/4.6/150	Stainless Steel Ties 4.6mm x 150mm	Self Colour	100
CT/SS/4.6/200	Stainless Steel Ties 4.6mm x 200mm	Self Colour	100
CT/SS/4.6/300	Stainless Steel Ties 4.6mm x 300mm	Self Colour	100
CT/SS/4.6/360	Stainless Steel Ties 4.6mm x 360mm	Self Colour	100
CT/SS/7.9/520	Stainless Steel Ties 7.9mm x 520mm	Self Colour	100
CT/SS/4.6/200/RED	LSZH coated 4.6 x 200 SS Tie	Red	100
CT/SS/4.6/200/BLACK	LSZH coated 4.6 x 200 SS Tie	Black	100
CT/SS/4.6/300/RED	LSZH coated 4.6 x 300 SS Tie	Red	100
CT/SS/4.6/300/BLACK	LSZH coated 4.6 x 300 SS Tie	Black	100

Part Number	Description	Pack Qty
CT/CR/SS/100	6mm Hole	100

TOP SELLER!
See Bulk Discounts on Page 4

18th Edition Compliant

18th Edition Compliant

Stainless Steel Fixing Kits

Own Branding Available

18th Edition Compliant

- 25 Stainless Steel Cable Ties + 25 Stainless Steel Bases + 25 Concrete Direct Fixing Screws (4.8 x 45mm)

Part Number	Description	Colour	Pack Qty
CT/SS/FK/200	25 x 200mm tie + 25 SS Saddles + 25 Screws	Natural	1
CT/SS/FK/300	25 x 300mm tie + 25 SS Saddles + 25 Screws	Natural	1
CT/SS/FK/360	25 x 360mm tie + 25 SS Saddles + 25 Screws	Natural	1
CT/SS/FK/200/RED	25 x 200mm tie + 25 SS Saddles + 25 Screws	Red	1
CT/SS/FK/200/BLACK	25 x 200mm tie + 25 SS Saddles + 25 Screws	Black	1
CT/SS/FK/300/RED	25 x 300mm tie + 25 SS Saddles + 25 Screws	Red	1
CT/SS/FK/300/BLACK	25 x 300mm tie + 25 SS Saddles + 25 Screws	Black	1

Cable Tie Tools



- Tensioning Guns for Nylon and Stainless Steel Cable Ties

Part Number	Description	Pack Qty
HT-2	Nylon Cable Tie Gun	1
HT-8	Cable Tie Gun	1

Metal Round Cable Clips

Easily secure cable with these fire resistant nail-in metal clips, steel BZP Flat twin and earth cable clips.

- Designed to safely secure cables at high temperatures
- Our Flat Cable Clips aid compliance with 18th Edition Wiring Regulations.
- Steel Flat Twin & Earth Cable Clips
- Pre-inserted super nail

18th Edition Compliant



Part Number	Colour	Cable Size	Size Approx	Pack Qty
CC/M/F/1.5	BZP	1 - 1.5mm	7.5 x 6mm	100
CC/M/F/2.5	BZP	2.5mm	9.0 x 6.5mm	100
CC/M/F/4.0	BZP	4mm	10.0 x 8.0mm	100
CC/M/F/6.0	BZP	6mm	13.0 x 8.0mm	100

Part Number	Colour	Cable Size	Colour	Pack Qty
CC/M/R/B	Black	8.75mm	Black	100
CC/M/R/W	White	8.75mm	White	100
CC/M/R/RED	Red	8.75mm	Red	100

Plastic Flat Cable Clips Twin & Earth

Part Number	Description	Colour	Pack Qty
CC/N/F/1.0	1.0mm	Grey	100
CC/N/F/1.5	1.5mm	Grey	100
CC/N/F/2.5	2.5mm	Grey	100
CC/N/F/4	4.0mm	Grey	100
CC/N/F/6	6.0mm	Grey	100
CC/N/F/10	10.0mm	Grey	100
CC/N/F/1.5/W	1.5mm	White	100
CC/N/F/2.5/W	2.5mm	White	100

TOP SELLER!



Plastic Round Cable Clips

Part Number	Description	Colour	Pack Qty
CC/N/R/4/W	4mm	White	100
CC/N/R/5/W	5mm	White	100
CC/N/R/6/W	6mm	White	100
CC/N/R/7/W	7mm	White	100
CC/N/R/8/W	8mm	White	100
CC/N/R/9/W	9mm	White	100
CC/N/R/10/W	10mm	White	100
CC/N/R/12/W	12mm	White	100
CC/N/R/14/W	14mm	White	100
CC/N/R/4/B	4mm	Black	100
CC/N/R/5/B	5mm	Black	100
CC/N/R/6/B	6mm	Black	100
CC/N/R/7/B	7mm	Black	100
CC/N/R/8/B	8mm	Black	100
CC/N/R/9/B	9mm	Black	100
CC/N/R/10/B	10mm	Black	100
CC/N/R/7/R	7mm	Red	100
CC/N/R/7/BR	7mm	Brown	100

TOP SELLER!

TOP SELLER!



1% Online Discount

www.cobracable.co.uk - Order now with the QR code

1% Online Discount

www.cobracable.co.uk - Order now with the QR code



- IP68
- Locknut and washer supplied as standard
- 2 Piece for speed of installation
- Milled edge for easy grip and fastening
- Packs of 10
- 4 Colours available

Part Number	Description	Colour	Pack Qty
GL/DT/16/B	16mm for Cable Size 5 - 10	Black	10
GL/DT/16/W	16mm for Cable Size 5 - 10	White	10
GL/DT/16/R	16mm for Cable Size 5 - 10	Red	10
GL/DT/16/G	16mm for Cable Size 5 - 10	Grey	10
GL/DT/20S/B	20mm for Cable Size 6 - 12	Black	10
GL/DT/20S/W	20mm for Cable Size 6 - 12	White	10
GL/DT/20S/R	20mm for Cable Size 6 - 12	Red	10
GL/DT/20S/G	20mm for Cable Size 6 - 12	Grey	10
GL/DT/20L/B	20mm for Cable Size 10- 14	Black	10
GL/DT/20L/W	20mm for Cable Size 10- 14	White	10
GL/DT/20L/R	20mm for Cable Size 10- 14	Red	10
GL/DT/20L/G	20mm for Cable Size 10- 14	Grey	10
GL/DT/25/B	25mm for Cable Size 13 - 18	Black	10
GL/DT/25/W	25mm for Cable Size 13 - 18	White	10
GL/DT/25/R	25mm for Cable Size 13 - 18	Red	10
GL/DT/25/G	25mm for Cable Size 13 - 18	Grey	10
GL/DT/32/B	32mm for Cable Size 13 - 18	Black	10
GL/DT/32/W	32mm for Cable Size 13 - 18	White	10
GL/DT/32/G	32mm for Cable Size 13 - 18	Grey	10
GL/DT/40/B	40mm for Cable Size 13 - 18	Black	10
GL/DT/40/W	40mm for Cable Size 22 - 32	White	10
GL/DT/40/G	40mm for Cable Size 22 - 32	Grey	10
GL/DT/50/B	50mm for Cable Size 32 - 38	Black	10
GL/DT/50/G	50mm for Cable Size 32 - 38	Grey	10
GL/DT/50/W	50mm for Cable Size 32 - 38	White	10
GL/DT/63/B	63mm for Cable Size 32 - 38	Black	10

TOP SELLER!

See Bulk Discounts on Page 4

POPULAR PRODUCT!

Own Branding Available

Meter Tail Gland Kits



- Meter Tail Gland Kit conforms for use with Metal Consumer Units
- 2 Sizes available for 16mm² tails or 25mm² tails
- Insert to Blank Earth Wire hole if not needed
- IP68
- Locknut supplied with Kits

Part Number	Description	Pack Qty
GL/DT/32/MTK	2 x 16mm ² + 1 x 10mm ²	1
GL/DT/32/MTK/L	2 x 25mm ² + 1 x 16mm ²	1



High Quality & Great Value for Money!

MORE GREAT PRODUCTS ON PAGE 49

- Convenient CobraTub's for Insulated Terminals added to current range.
- Contractor Tubs for all popular selling lines
- Tough, reusable and resealable tubs

Part Number	Description	Colour	Pack Qty
TUB/CT1	CobraTub 1 - Red Plugs and Screws - 500 x No8 x 1 1/2" Pozzi Screws Twin threads + 500 Red Wall Plugs c/w 2 Pozzi Drive Bits	Red	1
TUB/CT2	CobraTub 2 - Brown Plugs and Screws - 400 x No10 x 2" Pozzi Screws Twin threads + 400 Brown Wall Plugs c/w 2 Pozzi Drive Bits	Brown	1
TUB/CT3	CobraTub 3 - Flat Grey Cable Clips - 400 x 1.0/1.5mm T&E + 400 x 2.5mm T&E clips	Grey	1
TUB/CT4	CobraTub 4 - Clout Nails - 2Kg of 40mm Galvanised Clout Nails		1
TUB/CT5	CobraTub 5 - Plasterboard Drive Anchors - 200 Self - drive fixings c/w 200 screws to suit - 2 Pozzi Driver Bits		1
TUB/CT6	CobraTub 6 - Trunking Clips - 100 x Concrete Direct Screws + 100 x 25mm Fire Clips + 10 x 50mm Fire Clips		1
TUB/CT7	CobraTub 7 - Machine Screw Tub - 200 x 35mm, 40mm, 50mm and 75mm		1
TUB/CT8	CobraTub 8 - Roofing Bolt Tray Tub - 100 x 12mm, 16mm, 20mm and 25mm		1
TUB/CT9	CobraTub 9 - Square Drive - Red Plugs and Screws - 500 Screws, 500 Wall Plugs		1

GREAT PRICE!

GREAT PRICE!

GREAT PRICE!



OWN BRANDING AVAILABLE NO EXTRA COST!
100 Tubs to qualify

1% Online Discount

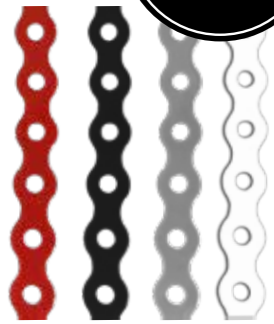
www.cobracable.co.uk - Order now with the QR code

1% Online Discount

www.cobracable.co.uk - Order now with the QR code

All Round Banding

Own Branding Available



All Round Banding

- Black, Red and White coatings are LSZH
- Easily cut to length
- Heavy duty thickness at 0.8mm

Part Number	Description	Colour	Pack Qty
ARB/12/BLACK/10M	12mm x 5mm Hole x 0.8mm x 10m Roll	Black	10M
ARB/12/RED/10M	12mm x 5mm Hole x 0.8mm x 10m Roll	Red	10M
ARB/12/GALV/10M	12mm x 5mm Hole x 0.8mm x 10m Roll	Galv	10M
ARB/12/WHITE/10M	12mm x 5mm Hole x 0.8mm x 10m Roll	White	10M
ARB/17/BLACK/10M	17mm x 7mm Hole x 0.8mm x 10m Roll	Black	10M
ARB/17/RED/10M	17mm x 7mm Hole x 0.8mm x 10m Roll	Red	10M
ARB/17/GALV/10M	17mm x 7mm Hole x 0.8mm x 10m Roll	Galv	10M

Switch and Socket Boxes



Material: Steel

Finish: Pre coated bright galvanized steel.

- All boxes include a unique regulation brass earth terminal to which several wires can be fitted.
- All boxes have adequate cable entries for wiring purpose (35 & 47mm have both 20 & 25mm knockouts).
- To facilitate the easy fitting of accessories into the boxes they are designed with at least 1 adjustable lug.
- Boxes are made to BS4662

TOP SELLER!

TOP SELLER!

Part Number	Description	Pack Qty
BB/1G/16/1	1 Gang 16mm BS4662	1
BB/1G/25/1	1 Gang 25mm BS4662	1
BB/1G/35/1	1 Gang 35mm BS4662	1
BB/1G/47/1	1 Gang 47mm BS4662	1
BB/2G/25/1	2 Gang 25mm BS4662	1
BB/2G/35/1	2 Gang 35mm BS4662	1
BB/2G/47/1	2 Gang 47mm BS4662	1
BB/DG/25/1	Dual Gang 25mm BS4662	1
BB/DG/35/1	Dual Gang 35mm BS4662	1
BB/1G+2G/1	1 Gang + 2 Gang BS4662	1
BB/3X1G/1	3 of the 1 Gangs BS4662	1

Fire Putty Boxes



Part Number	Description
FP/I/1G	Fire Putty 1G Internal
FP/I/2G	Fire Putty 2G Internal
FP/E/1G	Fire Putty 1G External
FP/E/2G	Fire Putty 2G External

Box Mounting Brackets (Telescopic)



- 2 sizes of telescopic box mounting brackets
- Pre-punched screw holes for easy box installation
- Speeds up installation of switch and socket boxes
- Adjustable for easy installation of 47mm boxes up to total depth of 54mm

Part Number	Description	Pack Qty
FX/TBM/24/1	Box Mounting Bracket - Telescopic from 15" - 26"	1

Metal Clad Boxes

Part Number	Description
MC/2G/DP	2G 13A Socket D.P Metal Clad Socket
MC/1G/DP	1G 13A Socket D.P Metal Clad Socket
MC/2G/P	2G Blank Plate Metal Clad
MC/1G/P	1G Blank Plate Metal Clad
MC/1G/NS	No Switch 1G 13A Metal Clad Socket
MC/2G/NS	No Switch 2G 13A Metal Clad Socket

Part Number	Description
MC/SW/1G2W	10 Amp 1 Gang 2 Way Switch
MC/SW/2G2W	10 Amp 2 Gang 2 Way Switch
MC/SW/3G2W	10 Amp 3 Gang 2 Way Switch
MC/SW/4G2W	10 Amp 4 Gang 2 Way Switch

Part Number	Description
MC/DP/SW	20 Amp DP Switch
MC/DP/SW/N	20 Amp DP Switch With Neon
MC/DP/SW/45A	45A DP Switch

Part Number	Description
MC/F/SW	13A DP Fused Unit
MC/F/SW/N	13A DP Fused Unit With Neon
MC/F	13A Fused Unit

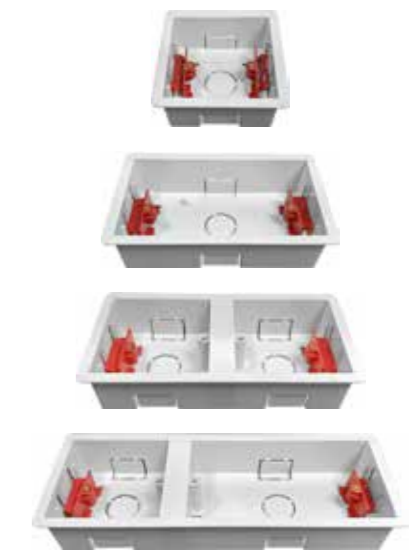
Part Number	Description
MC/1G/RCD	1G RCD Passive 13A
MC/2G/RCD	2G RCD Passive 13A

Part Number	Description
MC/F/RCD	Fused Spur RCD Passive (L) 13A 30mA



Dry Lining Boxes

Part Number	Description	Pack Qty
DL/1G/35	1 Gang 35mm Dry Lining Box	1
DL/2G/35	2 Gang 35mm Dry Lining Box	1
DL/1G/47	1 Gang 47mm Dry Lining Box	1
DL/2G/47	2 Gang 47mm Dry Lining Box	1
DL/DUEL/11	1+1 35mm Dry Lining Box	1
DL/DUEL/12	1+2 35mm Dry Lining Box	1
DL/R/35	Round 35mm Dry Lining Box	1



Rotary Isolators



Features & Benefits

- IP65 Rated
- Padlockable Handle
- Easy Access & Switch Removal
- Deep working space
- BS EN60947 Compliant
- Variable Knockouts on 32 Amp and above
- ABS Material (Moulded) - Flame Retardant
- Our range of 415V Rotary Isolators are designed to give your customers all they need in safety, adaptability and value. Check out some of the features:

Part Number	Type	Knockout Size	Pack Qty
RI/20	20 Amp 4 Pole	20mm	1
RI/20/L	20 Amp XL Case	Dual 20/25mm	1
RI/25	25 Amp 4 Pole	Dual 20/25mm	1
RI/32	32 Amp 4 Pole	Dual 20/25mm	1
RI/40	40 Amp 4 Pole	Dual 20/25mm	1
RI/63	63 Amp 4 Pole	Dual 20/25mm	1
RI/100	100 Amp 4 Pole	Dual 20/25mm & 2 x 20mm	1

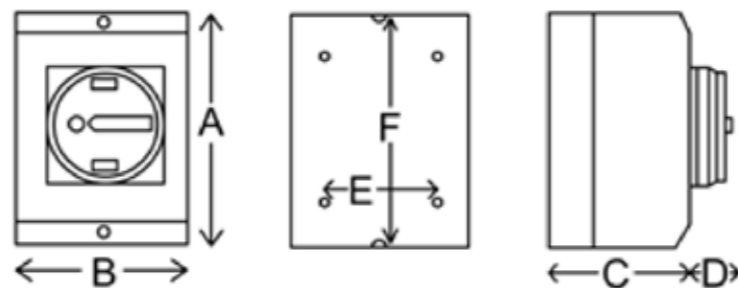


Technical Information

Code	IEC / EN / VDE					
	Category No. AC-21a Switching of resistance loads		Category No. AC-23a Switching of motor loads		Category No. AC-3a Start & shutdown during run	
	220-240V	380-440V	220-240V	380-440V	220-240V	380-440V
RI/20	20A	20A	3kW	5.5Kw	2Kw	3Kw
RI/20/L	20A	20A	3kW	5.5Kw	2Kw	3Kw
RI/32	32A	32A	5.5kW	7.5Kw	4Kw	7.5Kw
RI/63	63A	63A	11Kw	22Kw	11Kw	12.5Kw
RI/100	100A	100A	22Kw	37Kw	18.5Kw	30Kw

Sizing Information

Amperage	Size mm					
	A	B	C	D	E	F
20	100	80	65	35	60	90
20 (RIL)	125	100	85	35	60	115
25	125	100	85	35	60	115
32	125	100	85	35	60	115
40	175	114	100	35	60	165
63	175	114	100	35	60	165
100	240	160	120	45	142	193



DC Rotary Isolators (Solar)



Part Number	Description
RI/DC/16	16 Amp DC Rotary Isolator
RI/DC/25	25 Amp DC Rotary Isolator
RI/DC/32	32 Amp DC Rotary Isolator

Solar Branch Connector



Part Number	Description
DC/Y2	T2 Solar Branch Connectors
DC/Y4	Y4 Solar Branch Connectors
DC/MC4	MC4 Type Connector Male + Female
DC/PMC	Panel Mount Solar Connectors Mc Type 30amp

Part Number	Description
DC/T2	T2 Solar Branch Connector
DC/T3	T3 Solar Branch Connector
DC/T4	T4 Solar Branch Connector
DC/T5	T5 Solar Branch Connector
DC/T6	T6 Solar Branch Connector



Crimping Tool



Part Number	Description
SOL/TOOL	MC4 Crimping Tool - 2.5-6mm2

Solar Connector Spanner



Part Number	Description
SOL/SPAN	Solar Connector Spanner

Solar Warning Labels

Part Number	Description
SOL/WL/B	10pk Solar Battery Area
SOL/WL	5pk Solar Warning Label
SOL/WL/PV	10pk Solar PV Warning Labels / Location Pack



1% Online Discount

www.cobracable.co.uk - Order now with the QR code

1% Online Discount

www.cobracable.co.uk - Order now with the QR code

Speed Fix



Part Number	Description	Pack Qty
SP/110/16/Y	Speed Fix - 110V - 16A - YELLOW - 3PIN (2PIN +E)	1
SP/110/32/Y	Speed Fix - 110V - 32A - YELLOW - 3PIN (2PIN +E)	1
SP/240/16/B	Speed Fix - 240V - 16A - BLUE - 3PIN (2PIN +E)	1
SP/240/32/B	Speed Fix - 240V - 32A - BLUE - 3PIN (2PIN +E)	1
SP/4/415/16/R	Speed Fix - 415V - 16A - RED - 4PIN (3PIN +E)	1
SP/4/415/32/R	Speed Fix - 415V - 32A - RED - 4PIN (3PIN +E)	1
SP/415/16/R	Speed Fix - 415V - 16A - RED - 5PIN (3PIN+N +E)	1
SP/415/32/R	Speed Fix - 415V - 32A - RED - 5PIN (3PIN +N+E)	1

Speed Fix Coupler



Part Number	Description	Pack Qty
SFC/110/16/Y	Speed Fix Coupler - 110V - 16A - YELLOW - 3PIN (2PIN +E)	1
SFC/110/32/Y	Speed Fix Coupler - 110V - 32A - YELLOW - 3PIN (2PIN +E)	1
SFC/240/16/B	Speed Fix Coupler - 240V - 16A - BLUE - 3PIN (2PIN +E)	1
SFC/240/32/B	Speed Fix Coupler - 240V - 32A - BLUE - 3PIN (2PIN +E)	1
SFC/415/16/4/R	Speed Fix Coupler - 415V - 16A - RED - 4PIN (3PIN +E)	1
SFC/415/32/4/R	Speed Fix Coupler - 415V - 32A - RED - 4PIN (3PIN +E)	1
SFC/415/16/5/R	Speed Fix Coupler - 415V - 16A - RED - 5PIN (3PIN+N +E)	1
SFC/110/16/5/R	Speed Fix Coupler - 415V - 32A - RED - 5PIN (3PIN +N+E)	1

Wall Socket



Part Number	Description	Pack Qty
WS/110/16/Y	Wall Socket - 110V - 16A - YELLOW - 3PIN (2PIN +E)	1
WS/110/32/Y	Wall Socket - 110V - 32A - YELLOW - 3PIN (2PIN +E)	1
WS/240/16/B	Wall Socket - 240V - 16A - BLUE - 3PIN (2PIN +E)	1
WS/240/32/B	Wall Socket - 240V - 32A - BLUE - 3PIN (2PIN +E)	1
4WS/4/415/16/R	Wall Socket - 415V - 16A - RED - 4PIN (3PIN +E)	1
4WS/4/415/32/R	Wall Socket - 415V - 32A - RED - 4PIN (3PIN +E)	1
WS/415/16/R	Wall Socket - 415V - 16A - RED - 5PIN (3PIN+N +E)	1
WS/415/32/R	Wall Socket - 415V - 32A - RED - 5PIN (3PIN +N+E)	1

Splitter



Part Number	Description	Pack Qty
Splitter/110	Splitter 1 X MALE 3 FEMALE 110V-16A YELLOW 3 (2P+E)	1
Splitter/240	2 X MALE 3 FEMALE 240V-32A BLUE 5 (3P+N+E)	1

Panel Mounts



Part Number	Description	Pack Qty
PM/110/16/Y	Panel Mount - 110V - 16A - YELLOW - 3PIN (2PIN +E)	1
PM/110/32/Y	Panel Mount - 110V - 32A - YELLOW - 3PIN (2PIN +E)	1
PM/240/16/B	Panel Mount - 240V - 16A - BLUE - 3PIN (2PIN +E)	1
PM/240/32/B	Panel Mount - 240V - 32A - BLUE - 3PIN (2PIN +E)	1
4P/4/415/16/R	Panel Mount - 415V - 16A - RED - 4PIN (3PIN +E)	1
4P/4/415/32/R	Panel Mount - 415V - 32A - RED - 4PIN (3PIN +E)	1
PM/415/16/R	Panel Mount - 415V - 16A - RED - 5PIN (3PIN+N +E)	1
PM/415/32/R	Panel Mount - 415V - 32A - RED - 5PIN (3PIN +N+E)	1

Interlocking Switch



Part Number	Description	Pack Qty
IS/110/16/Y	Interlocking Switch - 110V - 16A - YELLOW - 3PIN (2PIN +E)	1
IS/110/32/Y	Interlocking Switch - 110V - 32A - YELLOW - 3PIN (2PIN +E)	1
IS/240/16/B	Interlocking Switch - 240V - 16A - BLUE - 3PIN (2PIN +E)	1
IS/240/32/B	Interlocking Switch - 240V - 32A - BLUE - 3PIN (2PIN +E)	1
IS/4/415/16/R	Interlocking Switch - 415V - 16A - RED - 4PIN (3PIN +E)	1
IS/4/415/32/R	Interlocking Switch - 415V - 32A - RED - 4PIN (3PIN +E)	1
IS/415/16/R	Interlocking Switch - 415V - 16A - RED - 5PIN (3PIN+N +E)	1
IS/415/32/R	Interlocking Switch - 415V - 32A - RED - 5PIN (3PIN +N+E)	1

IP67 Plug & Connector Range Red and Blue



Part Number	Description	Pack Qty
PR/IP67/240/16W	IP67 Plug Range 240V 16W - BLUE	1
PR/IP67/415/63W	IP67 Plug Range 415V 63W - RED	1
CR/IP67/240/16W	IP67 Connector Range 240V 16V BLUE	1
CR/IP67/415/63W	IP67 Connector Range 415V 63W RED	1



Shop Online!

Visit our website to see our full range of products

www.cobracable.co.uk

1% Online Discount

www.cobracable.co.uk - Order now with the QR code

1% Online Discount

www.cobracable.co.uk - Order now with the QR code

Outdoor Switched Sockets



- IP66 rated
- Compliant to BS 1363-2
- 8 knockouts and 1 cut-out entry option on rear
- UV Resistant.
- Lockable and supplied with fixing caps.

Part Number	Description	Pack Qty
ODSS1G	1 Gang 13Amp Double Pole IP66	1
ODSS2G	2 Gang 13Amp Double Pole IP66	1

Weatherproof Switches



- IP66 rated
- Comes complete with fixing caps.
- UV Resistant - will not fade
- Compliant to BS 60669-1

Part Number	Description	Pack Qty
WS1G2W	1 Gang 2 Way 20Amp IP66	1
WS1G2WR	1 Gang 2 Way Retractive 20Amp	1
WSW1GDP	1 Gang Double Pole 20Amp IP66	1
WS2G2W	2 Gang 2 Way 20Amp IP66	1

TOP SELLER!

Weatherproof Empty Enclosures



- IP66 rated, compatible with all standard 1 and 2 gang plates.

Part Number	Description	Pack Qty
ODE1G	Empty Single Enclosure IP66	1
ODE2G	Empty Double Enclosure IP66	1

Weatherproof Fused Spur Switch



- IP66 rated, compatible with all standard 1 and 2 gang plates.

Part Number	Description	Pack Qty
WFSS1	1 Gang 13Amp RCD Fused Spur Passive (L)	1
WFSSN	1 Gang 13amp Switched Fused Spur with Neon	1

Weatherproof RCD Switch



Part Number	Description	Pack Qty
WFSS2G	2 Gang 13Amp RCD Switched Passive (L)	1

Own Branding Available

Insulated Terminals

Part Number	Description	Colour	Pack Qty	Ring
CK/R/R4	Ring for 4mm Stud for Cable Size 0.5mm - 1.5mm	Red	100	
CK/R/R5	Ring for 5mm Stud for Cable Size 0.5mm - 1.5mm	Red	100	
CK/R/R6	Ring for 6mm Stud for Cable Size 0.5mm - 1.5mm	Red	100	TOP SELLER!
CK/B/R4	Ring for 4mm Stud for Cable Size 1.5mm - 2.5mm	Blue	100	
CK/B/R5	Ring for 5mm Stud for Cable Size 1.5mm - 2.5mm	Blue	100	
CK/B/R6	Ring for 6mm Stud for Cable Size 1.5mm - 2.5mm	Blue	100	
CK/Y/R4	Ring for 4mm Stud for Cable Size 4mm - 6mm	Yellow	100	
CK/Y/R5	Ring for 5mm Stud for Cable Size 4mm - 6mm	Yellow	100	
CK/Y/R6	Ring for 6mm Stud for Cable Size 4mm - 6mm	Yellow	100	TOP SELLER!
CK/Y/R8	Ring for 8mm Stud for Cable Size 4mm - 6mm	Yellow	100	
CK/Y/R10	Ring for 10mm Stud for Cable Size 4mm - 6mm	Yellow	100	



Part Number	Description	Colour	Pack Qty	Male & Female Spade
CK/R/MS	Male Spade for 6mm for Cable Size 0.5mm - 1.5mm	Red	100	
CK/B/MS	Male Spade for 6mm for Cable Size 1.5mm - 2.5mm	Blue	100	
CK/Y/MS	Male Spade for 6mm for Cable Size 4mm - 6mm	Yellow	100	
CK/R/FS	Female Spade for 6mm for Cable Size 0.5mm - 1.5mm	Red	100	
CK/B/FS	Female Spade for 6mm for Cable Size 1.5mm - 2.5mm	Blue	100	
CK/Y/FS	Female Spade for 6mm for Cable Size 4mm - 6mm	Yellow	100	



Part Number	Description	Colour	Pack Qty	Fully Insulated Female Spade
CK/R/FS/FI	Fully Insulated Female Spade for 6mm for Cable 0.5mm - 1.5mm	Red	100	
CK/B/FS/FI	Fully Insulated Female Spade for 6mm for Cable 1.5mm - 2.5mm	Blue	100	
CK/Y/FS/FI	Fully Insulated Female Spade for 6mm for Cable 4mm - 6mm	Yellow	100	



Buy 50 packs and receive a FREE stand



1% Online Discount

www.cobracable.co.uk - Order now with the QR code

1% Online Discount

www.cobracable.co.uk - Order now with the QR code

Male Bullet



Part Number	Description	Colour	Pack Qty
CK/R/MB	Male Bullet 4mm for cable size 0.5mm - 1.5mm	Red	100
CK/B/MB	Male Bullet 5mm for cable size 1.5mm - 2.5mm	Blue	100
CK/Y/MB	Male Bullet 6mm for cable size 4mm - 6mm	Yellow	100

Female Bullet



Part Number	Description	Colour	Pack Qty
CK/R/FB	Female Bullet 4mm for cable size 0.5mm - 1.5mm	Red	100
CK/B/FB	Female Bullet 5mm for cable size 1.5mm - 2.5mm	Blue	100
CK/Y/FB	Female Bullet 6mm for cable size 4mm - 6mm	Yellow	100

Pin



Part Number	Description	Colour	Pack Qty
CK/R/PIN10	Pin 10mm Long for Cable Size 0.5mm - 1.5mm	Red	100
CK/R/PIN12	Pin 12mm Long for Cable Size 0.5mm - 1.5mm	Red	100
CK/B/PIN10	Pin 10mm Long for Cable Size 1.5mm - 2.5mm	Blue	100
CK/B/PIN12	Pin 12mm Long for Cable Size 1.5mm - 2.5mm	Blue	100
CK/Y/PIN10	Pin 10mm Long for Cable Size 4mm - 6mm	Yellow	100

Butt Connector



TOP SELLER!

Part Number	Description	Colour	Pack Qty
CK/R/BC	Butt Connector for Cable Size 0.5mm - 1.5mm	Red	100
CK/B/BC	Butt Connector for Cable Size 1.5mm - 2.5mm	Blue	100
CK/Y/BC	Butt Connector for Cable Size 4mm - 6mm	Yellow	100

Fork



Part Number	Description	Colour	Pack Qty
CK/R/F3.5	Fork for 3.5mm Stud for Cable Size 0.5mm - 1.5mm	Red	100
CK/R/F4	Fork for 4mm Stud for Cable Size 0.5mm - 1.5mm	Red	100
CK/B/F4	Fork for 4mm Stud for Cable Size 1.5mm - 2.5mm	Blue	100
CK/B/F5	Fork for 5mm Stud for Cable Size 1.5mm - 2.5mm	Blue	100
CK/Y/F4	Fork for 4mm Stud for Cable Size 4mm - 6mm	Yellow	100
CK/Y/F5	Fork for 5mm Stud for Cable Size 4mm - 6mm	Yellow	100
CK/Y/F6	Fork for 6mm Stud for Cable Size 4mm - 6mm	Yellow	100

Jelly Crimps



Used for joining solid core telephone and communications wires. Also used for low voltage lighting installation
 CK/JC/2 - Suitable for up to 2.06mm overall thickness cable.
 CK/JC/3 - Suitable for up to 1.67mm overall thickness cable.

Part Number	Description	Colour	Pack Qty
CK/JC/2	8A 2 Way	Orange	100
CK/JC/3	8A 3 Way	Red	100

Blade



Part Number	Description	Colour	Pack Qty
CK/R/B10	Blade for 10mm Long for Cable 0.5mm - 1.5mm	Red	100
CK/R/B18	Blade for 18mm Long for Cable 0.5mm - 1.5mm	Red	100
CK/B/B9	Blade for 9mm Long for Cable 1.5mm - 2.5mm	Blue	100
CK/B/B18	Blade for 18mm Long for Cable 1.5mm - 2.5mm	Blue	100
CK/Y/B10	Blade for 10mm Long for Cable 4mm - 6mm	Yellow	100

Female Spade Piggyback



Part Number	Description	Colour	Pack Qty
CK/R/PB	Female Spade Piggyback for 6mm for Cable 0.5mm - 1.5mm	Red	100
CK/B/PB	Female Spade Piggyback for 6mm for Cable 1.5mm - 2.5mm	Blue	100
CK/Y/PB	Female Spade Piggyback for 6mm for Cable 4mm - 6mm	Yellow	100

Bootlace Terminals - French Range



Part Number	Description	Colour	Pack Qty
CK/FR/BL/WHITE/814	Bootlace Terminal 8mm Long 1.4mm dia. Cable Size 0.5mm	White	100
CK/FR/BL/BLUE/815	Bootlace Terminal 8mm Long 1.5mm dia. Cable Size 0.75mm	Blue	100
CK/FR/BL/RED/818	Bootlace Terminal 8mm Long 1.8mm dia. Cable Size 1mm	Red	100
CK/FR/BL/BLACK/820	Bootlace Terminal 8mm Long 2mm dia. Cable Size 1.5mm	Black	100
CK/FR/BL/GREY/826	Bootlace Terminal 8mm Long 2.6mm dia. Cable Size 2.5mm	Grey	100
CK/FR/BL/ORANGE/932	Bootlace Terminal 9mm Long 3.2mm dia. Cable Size 4mm	Orange	100
CK/FR/BL/GREEN/1239	Bootlace Terminal 12mm Long 3.9mm dia. Cable Size 6mm	Green	100
CK/FR/BL/BROWN/1249	Bootlace Terminal 12mm Long 4.9mm dia. Cable Size 10mm	Brown	100



Bootlace Terminals - German Range



Part Number	Description	Colour	Pack Qty
CK/GR/BL/ORANGE/814	Bootlace Terminal 8mm Long 1.4mm dia. Cable Size 0.5mm	Orange	100
CK/GR/BL/WHITE/815	Bootlace Terminal 8mm Long 1.5mm dia. Cable Size 0.75mm	White	100
CK/GR/BL/YELLOW/818	Bootlace Terminal 8mm Long 1.8mm dia. Cable Size 1mm	Yellow	100
CK/GR/BL/RED/820	Bootlace Terminal 8mm Long 2mm dia. Cable Size 1.5mm	Red	100
CK/GR/BL/BLUE/826	Bootlace Terminal 8mm Long 2.6mm dia. Cable Size 2.5mm	Blue	100
CK/GR/BL/GREY/932	Bootlace Terminal 9mm Long 3.2mm dia. Cable Size 4mm	Grey	100
CK/GR/BL/BLACK/1239	Bootlace Terminal 12mm Long 3.9mm dia. Cable Size 6mm	Black	100
CK/GR/BL/WHITE/1249	Bootlace Terminal 12mm Long 4.9mm dia. Cable Size 10mm	White	100



Double Cord End Terminal

Part Number	Description	Pack Qty
CK/DCE/05/WHITE	0.5mm Double Cord End Terminal	100
CK/DCE/75/GREY	0.75mm Double Cord End Terminal	100
CK/DCE/1/RED	1mm Double Cord End Terminal	100
CK/DCE/15/BLACK	1.5mm Double Cord End Terminal	100
CK/DCE/25/BLUE	2.5mm Double Cord End Terminal	100
CK/DCE/4/GREY	4mm Double Cord End Terminal	100
CK/DCE/6/YELLOW	6mm Double Cord End Terminal	100
CK/DCE/10/RED	10mm Double Cord End Terminal	100
CK/DCE/16/BLUE	16mm Double Cord End Terminal	100



Hydraulic Crimping Tool - BPP062



Description	Price
Pistol Type <ul style="list-style-type: none"> This professional crimping tool has a very light, rotating head which opens and closes quickly making it easy to replace die sets 	P.O.A

Hydraulic Crimping Tool - BPP080



Description	Price
Pistol Type <ul style="list-style-type: none"> This professional crimping tool has a very light, rotating head which opens and closes quickly making it easy to replace die sets. 	P.O.A

Hydraulic Crimping Tool - BPP130



Description	Price
Pistol Type <ul style="list-style-type: none"> Available in a range of strokes from 26mm through to 38mm, and designed for overhead lines crimping, it is fitted with an emergency stop. 	P.O.A

Hydraulic Crimping Tool - BPP130U



Description	Price
Pistol Type <ul style="list-style-type: none"> This deep-indenting crimping tool has a maximum passage of 34mm, is ideal for underground lines and employs a mechanical stop. 	P.O.A

Hydraulic Crimping Tool - BPP0500



Description	Price
Pistol Type <ul style="list-style-type: none"> This dieless 4 indent crimping tool employs a two-speed hydraulic system designed for the crimping of lugs and sleeves on multi-strand cables. 	P.O.A

Hydraulic Crimping Tool - BPP050F



Description	Price
Pistol Type <ul style="list-style-type: none"> This flip-top dieless 4 indent crimping tool with a newly designed lighter and thinner head is ideal for crimping lugs and sleeves on multi-strand cables.. 	P.O.A

Hydraulic Crimping Tool - BPL031



Description	Price
In-Line Type <ul style="list-style-type: none"> This professional crimping tool has a very light, rotating head which opens and closes quickly making it easy to replace die sets. 	P.O.A

Hydraulic Crimping Tool - BPL036



Description	Price
In-Line Type <ul style="list-style-type: none"> This professional crimping tool has a very light, rotating head which opens and closes quickly making it easy to replace die sets. 	P.O.A

Hydraulic Crimping Tool - BPL055



Description	Price
In-Line Type <ul style="list-style-type: none"> This professional crimping tool has a very light, rotating head which opens and closes quickly making it easy to replace die sets. 	P.O.A

Hydraulic Crimping Tool - BPL062



Description	Price
In-Line Type <ul style="list-style-type: none"> An in-line crimping tool with a quick opening and closing head for easy replacement of die sets. 	P.O.A



Hydraulic Crimping Tool - D31



Description	Price
Manual Type <ul style="list-style-type: none"> The most compact tool on the market, it is ideal for crimping LV/MV lugs. It has a narrow head for working in switchboards and can be operated with one hand. 	P.O.A

Hydraulic Crimping Tool - D36



Description	Price
Manual Type <ul style="list-style-type: none"> A manual hydraulic crimping tool with a quick opening and closing head allowing easy replacement of die sets. 	P.O.A

Hydraulic Crimping Tool - D51



Description	Price
Manual Type <ul style="list-style-type: none"> With a quick opening and closing head, it is easy to replace die sets. The ball head dowel enables setting of 38mm or 30mm width die. 	P.O.A

Hydraulic Crimping Tool - D62



Description	Price
Manual Type <ul style="list-style-type: none"> With a quick opening and closing head, it is easy to replace die sets. The two-speed hydraulic system enables a fast advance. 	P.O.A

Hydraulic Crimping Tool - D80



Description	Price
Manual Type <ul style="list-style-type: none"> With a quick opening and closing head, it is easy to replace die sets. The two-speed hydraulic system enables a fast advance. 	P.O.A

Hydraulic Crimping Tool - C130 NEO



Description	Price
Manual Type <ul style="list-style-type: none"> With a quick opening and closing head, it is easy to replace die sets. The two-speed hydraulic system enables a fast advance. 	P.O.A

Hydraulic Crimping Tool - H130



Description	Price
Manual Type <ul style="list-style-type: none"> This deep-indenting manual crimping tool has a maximum passage of 34mm and a manual stop. It has a two-speed hydraulic system for a fast advance. 	P.O.A



Shop Online!

Visit our website to see our full range of products

www.cobracable.co.uk

1% Online Discount



www.cobracable.co.uk - Order now with the QR code

1% Online Discount



www.cobracable.co.uk - Order now with the QR code



Part Number	Description	Pack Qty
SC/L/90B/10/5	10mmsq Cable Entry bent at 90Deg - M5 clearance stud hole	10
SC/L/90B/10/6	10mmsq Cable Entry bent at 90Deg - M6 clearance stud hole	10
SC/L/90B/10/8	10mmsq Cable Entry bent at 90Deg - M8 clearance stud hole	10
SC/L/90B/10/10	10mmsq Cable Entry bent at 90Deg - M10 clearance stud hole	10
SC/L/90B/10/12	10mmsq Cable Entry bent at 90Deg - M12 clearance stud hole	10
SC/L/90B/16/5	16mmsq Cable Entry bent at 90Deg - M5 clearance stud hole	10
SC/L/90B/16/6	16mmsq Cable Entry bent at 90Deg - M6 clearance stud hole	10
SC/L/90B/16/8	16mmsq Cable Entry bent at 90Deg - M8 clearance stud hole	10
SC/L/90B/16/10	16mmsq Cable Entry bent at 90Deg - M10 clearance stud hole	10
SC/L/90B/16/12	16mmsq Cable Entry bent at 90Deg - M12 clearance stud hole	10
SC/L/90B/25/5	25mmsq Cable Entry bent at 90Deg - M5 clearance stud hole	10
SC/L/90B/25/6	25mmsq Cable Entry bent at 90Deg - M6 clearance stud hole	10
SC/L/90B/25/8	25mmsq Cable Entry bent at 90Deg - M8 clearance stud hole	10
SC/L/90B/25/10	25mmsq Cable Entry bent at 90Deg - M10 clearance stud hole	10
SC/L/90B/25/12	25mmsq Cable Entry bent at 90Deg - M12 clearance stud hole	10
SC/L/90B/35/5	35mmsq Cable Entry bent at 90Deg - M5 clearance stud hole	10
SC/L/90B/35/6	35mmsq Cable Entry bent at 90Deg - M6 clearance stud hole	10
SC/L/90B/35/8	35mmsq Cable Entry bent at 90Deg - M8 clearance stud hole	10
SC/L/90B/35/10	35mmsq Cable Entry bent at 90Deg - M10 clearance stud hole	10
SC/L/90B/35/12	35mmsq Cable Entry bent at 90Deg - M12 clearance stud hole	10
SC/L/90B/50/5	50mmsq Cable Entry bent at 90Deg - M5 clearance stud hole	10
SC/L/90B/50/6	50mmsq Cable Entry bent at 90Deg - M6 clearance stud hole	10
SC/L/90B/50/8	50mmsq Cable Entry bent at 90Deg - M8 clearance stud hole	10
SC/L/90B/50/10	50mmsq Cable Entry bent at 90Deg - M10 clearance stud hole	10
SC/L/90B/50/12	50mmsq Cable Entry bent at 90Deg - M12 clearance stud hole	10
SC/L/90B/70/5	70mmsq Cable Entry bent at 90Deg - M5 clearance stud hole	10
SC/L/90B/70/6	70mmsq Cable Entry bent at 90Deg - M6 clearance stud hole	10
SC/L/90B/70/8	70mmsq Cable Entry bent at 90Deg - M8 clearance stud hole	10
SC/L/90B/70/10	70mmsq Cable Entry bent at 90Deg - M10 clearance stud hole	10
SC/L/90B/70/12	70mmsq Cable Entry bent at 90Deg - M12 clearance stud hole	10
SC/L/90B/70/16	70mmsq Cable Entry bent at 90Deg - M16 clearance stud hole	10
SC/L/90B/95/5	95mmsq Cable Entry bent at 90Deg - M5 clearance stud hole	10
SC/L/90B/95/6	95mmsq Cable Entry bent at 90Deg - M6 clearance stud hole	10
SC/L/90B/95/8	95mmsq Cable Entry bent at 90Deg - M8 clearance stud hole	10
SC/L/90B/95/10	95mmsq Cable Entry bent at 90Deg - M10 clearance stud hole	10
SC/L/90B/95/12	95mmsq Cable Entry bent at 90Deg - M12 clearance stud hole	10

Part Number	Description	Pack Qty
SC/L/90B/95/14	95mmsq Cable Entry bent at 90Deg - M14 clearance stud hole	10
SC/L/90B/95/16	95mmsq Cable Entry bent at 90Deg - M16 clearance stud hole	10
SC/L/90B/120/5	120mmsq Cable Entry bent at 90Deg - M5 clearance stud hole	10
SC/L/90B/120/6	120mmsq Cable Entry bent at 90Deg - M6 clearance stud hole	10
SC/L/90B/120/8	120mmsq Cable Entry bent at 90Deg - M8 clearance stud hole	10
SC/L/90B/120/10	120mmsq Cable Entry bent at 90Deg - M10 clearance stud hole	10
SC/L/90B/120/12	120mmsq Cable Entry bent at 90Deg - M12 clearance stud hole	10
SC/L/90B/120/14	120mmsq Cable Entry bent at 90Deg - M14 clearance stud hole	10
SC/L/90B/120/16	120mmsq Cable Entry bent at 90Deg - M16 clearance stud hole	10
SC/L/90B/150/5	150mmsq Cable Entry bent at 90Deg - M5 clearance stud hole	10
SC/L/90B/150/6	150mmsq Cable Entry bent at 90Deg - M6 clearance stud hole	10
SC/L/90B/150/8	150mmsq Cable Entry bent at 90Deg - M8 clearance stud hole	10
SC/L/90B/150/10	150mmsq Cable Entry bent at 90Deg - M10 clearance stud hole	10
SC/L/90B/150/12	150mmsq Cable Entry bent at 90Deg - M12 clearance stud hole	10
SC/L/90B/150/14	150mmsq Cable Entry bent at 90Deg - M14 clearance stud hole	10
SC/L/90B/150/16	150mmsq Cable Entry bent at 90Deg - M16 clearance stud hole	10
SC/L/90B/185/5	185mmsq Cable Entry bent at 90Deg - M5 clearance stud hole	10
SC/L/90B/185/6	185mmsq Cable Entry bent at 90Deg - M6 clearance stud hole	10
SC/L/90B/185/8	185mmsq Cable Entry bent at 90Deg - M8 clearance stud hole	10
SC/L/90B/185/10	185mmsq Cable Entry bent at 90Deg - M10 clearance stud hole	10
SC/L/90B/185/12	185mmsq Cable Entry bent at 90Deg - M12 clearance stud hole	10
SC/L/90B/185/14	185mmsq Cable Entry bent at 90Deg - M14 clearance stud hole	10
SC/L/90B/185/16	185mmsq Cable Entry bent at 90Deg - M16 clearance stud hole	10
SC/L/90B/240/5	240mmsq Cable Entry bent at 90Deg - M5 clearance stud hole	10
SC/L/90B/240/6	240mmsq Cable Entry bent at 90Deg - M6 clearance stud hole	10
SC/L/90B/240/8	240mmsq Cable Entry bent at 90Deg - M8 clearance stud hole	10
SC/L/90B/240/10	240mmsq Cable Entry bent at 90Deg - M10 clearance stud hole	10
SC/L/90B/240/12	240mmsq Cable Entry bent at 90Deg - M12 clearance stud hole	10
SC/L/90B/240/14	240mmsq Cable Entry bent at 90Deg - M14 clearance stud hole	10
SC/L/90B/240/16	240mmsq Cable Entry bent at 90Deg - M16 clearance stud hole	10
SC/L/90B/300/5	300mmsq Cable Entry bent at 90Deg - M5 clearance stud hole	10
SC/L/90B/300/6	300mmsq Cable Entry bent at 90Deg - M6 clearance stud hole	10
SC/L/90B/300/8	300mmsq Cable Entry bent at 90Deg - M8 clearance stud hole	10
SC/L/90B/300/10	300mmsq Cable Entry bent at 90Deg - M10 clearance stud hole	10
SC/L/90B/300/12	300mmsq Cable Entry bent at 90Deg - M12 clearance stud hole	10
SC/L/90B/300/14	300mmsq Cable Entry bent at 90Deg - M14 clearance stud hole	10
SC/L/90B/300/16	300mmsq Cable Entry bent at 90Deg - M16 clearance stud hole	10

Ordering made easy!

Scan the QR code opposite and order online from our full range of products

SCAN QR CODE >>



1% Online Discount

www.cobracable.co.uk - Order now with the QR code

1% Online Discount

www.cobracable.co.uk - Order now with the QR code



Part Number	Description	Pack Qty
SC/L/45B/10/5	10mmsq Cable Entry bent at 45Deg - M5 clearance stud hole	10
SC/L/45B/10/6	10mmsq Cable Entry bent at 45Deg - M6 clearance stud hole	10
SC/L/45B/10/8	10mmsq Cable Entry bent at 45Deg - M8 clearance stud hole	10
SC/L/45B/10/10	10mmsq Cable Entry bent at 45Deg - M10 clearance stud hole	10
SC/L/45B/10/12	10mmsq Cable Entry bent at 45Deg - M12 clearance stud hole	10
SC/L/45B/16/5	16mmsq Cable Entry bent at 45Deg - M5 clearance stud hole	10
SC/L/45B/16/6	16mmsq Cable Entry bent at 45Deg - M6 clearance stud hole	10
SC/L/45B/16/8	16mmsq Cable Entry bent at 45Deg - M8 clearance stud hole	10
SC/L/45B/16/10	16mmsq Cable Entry bent at 45Deg - M10 clearance stud hole	10
SC/L/45B/16/12	16mmsq Cable Entry bent at 45Deg - M12 clearance stud hole	10
SC/L/45B/25/5	25mmsq Cable Entry bent at 45Deg - M5 clearance stud hole	10
SC/L/45B/25/6	25mmsq Cable Entry bent at 45Deg - M6 clearance stud hole	10
SC/L/45B/25/8	25mmsq Cable Entry bent at 45Deg - M8 clearance stud hole	10
SC/L/45B/25/10	25mmsq Cable Entry bent at 45Deg - M10 clearance stud hole	10
SC/L/45B/25/12	25mmsq Cable Entry bent at 45Deg - M12 clearance stud hole	10
SC/L/45B/35/5	35mmsq Cable Entry bent at 45Deg - M5 clearance stud hole	10
SC/L/45B/35/6	35mmsq Cable Entry bent at 45Deg - M6 clearance stud hole	10
SC/L/45B/35/8	35mmsq Cable Entry bent at 45Deg - M8 clearance stud hole	10
SC/L/45B/35/10	35mmsq Cable Entry bent at 45Deg - M10 clearance stud hole	10
SC/L/45B/35/12	35mmsq Cable Entry bent at 45Deg - M12 clearance stud hole	10
SC/L/45B/50/5	50mmsq Cable Entry bent at 45Deg - M5 clearance stud hole	10
SC/L/45B/50/6	50mmsq Cable Entry bent at 45Deg - M6 clearance stud hole	10
SC/L/45B/50/8	50mmsq Cable Entry bent at 45Deg - M8 clearance stud hole	10
SC/L/45B/50/10	50mmsq Cable Entry bent at 45Deg - M10 clearance stud hole	10
SC/L/45B/50/12	50mmsq Cable Entry bent at 45Deg - M12 clearance stud hole	10
SC/L/45B/70/5	70mmsq Cable Entry bent at 45Deg - M5 clearance stud hole	10
SC/L/45B/70/6	70mmsq Cable Entry bent at 45Deg - M6 clearance stud hole	10
SC/L/45B/70/8	70mmsq Cable Entry bent at 45Deg - M8 clearance stud hole	10
SC/L/45B/70/10	70mmsq Cable Entry bent at 45Deg - M10 clearance stud hole	10
SC/L/45B/70/12	70mmsq Cable Entry bent at 45Deg - M12 clearance stud hole	10
SC/L/45B/95/5	95mmsq Cable Entry bent at 45Deg - M5 clearance stud hole	10
SC/L/45B/95/6	95mmsq Cable Entry bent at 45Deg - M6 clearance stud hole	10
SC/L/45B/95/8	95mmsq Cable Entry bent at 45Deg - M8 clearance stud hole	10
SC/L/45B/95/10	95mmsq Cable Entry bent at 45Deg - M10 clearance stud hole	10
SC/L/45B/95/12	95mmsq Cable Entry bent at 45Deg - M12 clearance stud hole	10

Part Number	Description	Pack Qty
SC/L/45B/95/14	95mmsq Cable Entry bent at 45Deg - M14 clearance stud hole	10
SC/L/45B/95/16	95mmsq Cable Entry bent at 45Deg - M16 clearance stud hole	10
SC/L/45B/120/5	120mmsq Cable Entry bent at 45Deg - M5 clearance stud hole	10
SC/L/45B/120/6	120mmsq Cable Entry bent at 45Deg - M6 clearance stud hole	10
SC/L/45B/120/8	120mmsq Cable Entry bent at 45Deg - M8 clearance stud hole	10
SC/L/45B/120/10	120mmsq Cable Entry bent at 45Deg - M10 clearance stud hole	10
SC/L/45B/120/12	120mmsq Cable Entry bent at 45Deg - M12 clearance stud hole	10
SC/L/45B/120/14	120mmsq Cable Entry bent at 45Deg - M14 clearance stud hole	10
SC/L/45B/120/16	120mmsq Cable Entry bent at 45Deg - M16 clearance stud hole	10
SC/L/45B/150/5	150mmsq Cable Entry bent at 45Deg - M5 clearance stud hole	10
SC/L/45B/150/6	150mmsq Cable Entry bent at 45Deg - M6 clearance stud hole	10
SC/L/45B/150/8	150mmsq Cable Entry bent at 45Deg - M8 clearance stud hole	10
SC/L/45B/150/10	150mmsq Cable Entry bent at 45Deg - M10 clearance stud hole	10
SC/L/45B/150/12	150mmsq Cable Entry bent at 45Deg - M12 clearance stud hole	10
SC/L/45B/150/14	150mmsq Cable Entry bent at 45Deg - M14 clearance stud hole	10
SC/L/45B/150/16	150mmsq Cable Entry bent at 45Deg - M16 clearance stud hole	10
SC/L/45B/185/5	185mmsq Cable Entry bent at 45Deg - M5 clearance stud hole	10
SC/L/45B/185/6	185mmsq Cable Entry bent at 45Deg - M6 clearance stud hole	10
SC/L/45B/185/8	185mmsq Cable Entry bent at 45Deg - M8 clearance stud hole	10
SC/L/45B/185/10	185mmsq Cable Entry bent at 45Deg - M10 clearance stud hole	10
SC/L/45B/185/12	185mmsq Cable Entry bent at 45Deg - M12 clearance stud hole	10
SC/L/45B/185/14	185mmsq Cable Entry bent at 45Deg - M14 clearance stud hole	10
SC/L/45B/185/16	185mmsq Cable Entry bent at 45Deg - M16 clearance stud hole	10
SC/L/45B/240/5	240mmsq Cable Entry bent at 45Deg - M5 clearance stud hole	10
SC/L/45B/240/6	240mmsq Cable Entry bent at 45Deg - M6 clearance stud hole	10
SC/L/45B/240/8	240mmsq Cable Entry bent at 45Deg - M8 clearance stud hole	10
SC/L/45B/240/10	240mmsq Cable Entry bent at 45Deg - M10 clearance stud hole	10
SC/L/45B/240/12	240mmsq Cable Entry bent at 45Deg - M12 clearance stud hole	10
SC/L/45B/240/14	240mmsq Cable Entry bent at 45Deg - M14 clearance stud hole	10
SC/L/45B/240/16	240mmsq Cable Entry bent at 45Deg - M16 clearance stud hole	10
SC/L/45B/300/5	300mmsq Cable Entry bent at 45Deg - M5 clearance stud hole	10
SC/L/45B/300/6	300mmsq Cable Entry bent at 45Deg - M6 clearance stud hole	10
SC/L/45B/300/8	300mmsq Cable Entry bent at 45Deg - M8 clearance stud hole	10
SC/L/45B/300/10	300mmsq Cable Entry bent at 45Deg - M10 clearance stud hole	10
SC/L/45B/300/12	300mmsq Cable Entry bent at 45Deg - M12 clearance stud hole	10
SC/L/45B/300/14	300mmsq Cable Entry bent at 45Deg - M14 clearance stud hole	10
SC/L/45B/300/16	300mmsq Cable Entry bent at 45Deg - M16 clearance stud hole	10

Ordering made easy!
 Scan the QR code opposite and order
 online from our full range of products
SCAN QR CODE >>



1% Online Discount

www.cobracable.co.uk - Order now with the QR code

1% Online Discount

www.cobracable.co.uk - Order now with the QR code



Part Number	Description	Pack Qty
SC/L/NP/10/6	10mmsq Contained Palm Lug with an M6 Stud Clearance	10
SC/L/NP/10/8	10mmsq Contained Palm Lug with an M8 Stud Clearance	10
SC/L/NP/10/10	10mmsq Contained Palm Lug with an M10 Stud Clearance	10
SC/L/NP/10/12	10mmsq Contained Palm Lug with an M12 Stud Clearance	10
SC/L/NP/16/5	16mmsq Contained Palm Lug with an M5 Stud Clearance	10
SC/L/NP/16/6	16mmsq Contained Palm Lug with an M6 Stud Clearance	10
SC/L/NP/16/8	16mmsq Contained Palm Lug with an M8 Stud Clearance	10
SC/L/NP/16/10	16mmsq Contained Palm Lug with an M10 Stud Clearance	10
SC/L/NP/16/12	16mmsq Contained Palm Lug with an M12 Stud Clearance	10
SC/L/NP/25/5	25mmsq Contained Palm Lug with an M5 Stud Clearance	10
SC/L/NP/25/6	25mmsq Contained Palm Lug with an M6 Stud Clearance	10
SC/L/NP/25/8	25mmsq Contained Palm Lug with an M8 Stud Clearance	10
SC/L/NP/25/10	25mmsq Contained Palm Lug with an M10 Stud Clearance	10
SC/L/NP/25/12	25mmsq Contained Palm Lug with an M12 Stud Clearance	10
SC/L/NP/35/5	35mmsq Contained Palm Lug with an M5 Stud Clearance	10
SC/L/NP/35/6	35mmsq Contained Palm Lug with an M6 Stud Clearance	10
SC/L/NP/35/8	35mmsq Contained Palm Lug with an M8 Stud Clearance	10
SC/L/NP/35/10	35mmsq Contained Palm Lug with an M10 Stud Clearance	10
SC/L/NP/35/12	35mmsq Contained Palm Lug with an M12 Stud Clearance	10
SC/L/NP/50/5	50mmsq Contained Palm Lug with an M5 Stud Clearance	10
SC/L/NP/50/6	50mmsq Contained Palm Lug with an M6 Stud Clearance	10
SC/L/NP/50/8	50mmsq Contained Palm Lug with an M8 Stud Clearance	10
SC/L/NP/50/10	50mmsq Contained Palm Lug with an M10 Stud Clearance	10
SC/L/NP/50/12	50mmsq Contained Palm Lug with an M12 Stud Clearance	10
SC/L/NP/70/5	70mmsq Contained Palm Lug with an M5 Stud Clearance	10
SC/L/NP/70/6	70mmsq Contained Palm Lug with an M6 Stud Clearance	10
SC/L/NP/70/8	70mmsq Contained Palm Lug with an M8 Stud Clearance	10
SC/L/NP/70/10	70mmsq Contained Palm Lug with an M10 Stud Clearance	10
SC/L/NP/95/6	95mmsq Contained Palm Lug with an M6 Stud Clearance	10
SC/L/NP/95/8	95mmsq Contained Palm Lug with an M8 Stud Clearance	10
SC/L/NP/95/10	95mmsq Contained Palm Lug with an M10 Stud Clearance	10
SC/L/NP/120/6	120mmsq Contained Palm Lug with an M6 Stud Clearance	10
SC/L/NP/120/8	120mmsq Contained Palm Lug with an M8 Stud Clearance	10
SC/L/NP/120/10	120mmsq Contained Palm Lug with an M10 Stud Clearance	10
SC/L/NP/120/12	120mmsq Contained Palm Lug with an M12 Stud Clearance	10
SC/L/NP/150/6	150mmsq Contained Palm Lug with an M6 Stud Clearance	10
SC/L/NP/150/8	150mmsq Contained Palm Lug with an M8 Stud Clearance	10
SC/L/NP/150/10	150mmsq Contained Palm Lug with an M10 Stud Clearance	10
SC/L/NP/150/12	150mmsq Contained Palm Lug with an M12 Stud Clearance	10
SC/L/NP/185/6	185mmsq Contained Palm Lug with an M6 Stud Clearance	10

Part Number	Description	Pack Qty
SC/L/NP/185/8	185mmsq Contained Palm Lug with an M8 Stud Clearance	10
SC/L/NP/185/10	185mmsq Contained Palm Lug with an M10 Stud Clearance	10
SC/L/NP/185/12	185mmsq Contained Palm Lug with an M12 Stud Clearance	10
SC/L/NP/185/14	185mmsq Contained Palm Lug with an M14 Stud Clearance	10
SC/L/NP/185/16	185mmsq Contained Palm Lug with an M16 Stud Clearance	10
SC/L/NP/240/8	240mmsq Contained Palm Lug with an M8 Stud Clearance	10
SC/L/NP/240/10	240mmsq Contained Palm Lug with an M10 Stud Clearance	10
SC/L/NP/240/12	240mmsq Contained Palm Lug with an M12 Stud Clearance	10
SC/L/NP/240/14	240mmsq Contained Palm Lug with an M14 Stud Clearance	10
SC/L/NP/240/16	240mmsq Contained Palm Lug with an M16 Stud Clearance	10
SC/L/NP/300/8	300mmsq Contained Palm Lug with an M8 Stud Clearance	10
SC/L/NP/300/10	300mmsq Contained Palm Lug with an M10 Stud Clearance	10
SC/L/NP/300/12	300mmsq Contained Palm Lug with an M12 Stud Clearance	10
SC/L/NP/300/14	300mmsq Contained Palm Lug with an M14 Stud Clearance	10
SC/L/NP/300/16	300mmsq Contained Palm Lug with an M16 Stud Clearance	10

2 Hole Cable Lugs 16mm Hole Centres



Part Number	Description	Pack Qty
SC/L/2H/10/6	10mm ² Tinned Copper Lug with 2 M6 holes at 16mm Hole Centres	10
SC/L/2H/10/8	10mm ² Tinned Copper Lug with 2 M8 holes at 16mm Hole Centres	10
SC/L/2H/16/6	16mm ² Tinned Copper Lug with 2 M6 holes at 16mm Hole Centres	10
SC/L/2H/16/8	16mm ² Tinned Copper Lug with 2 M8 holes at 16mm Hole Centres	10
SC/L/2H/25/6	25mm ² Tinned Copper Lug with 2 M6 holes at 16mm Hole Centres	10
SC/L/2H/25/8	25mm ² Tinned Copper Lug with 2 M8 holes at 16mm Hole Centres	10
SC/L/2H/35/6	35mm ² Tinned Copper Lug with 2 M6 holes at 16mm Hole Centres	10
SC/L/2H/35/8	35mm ² Tinned Copper Lug with 2 M8 holes at 16mm Hole Centres	10
SC/L/2H/50/6	50mm ² Tinned Copper Lug with 2 M6 holes at 16mm Hole Centres	10
SC/L/2H/50/8	50mm ² Tinned Copper Lug with 2 M8 holes at 16mm Hole Centres	10
SC/L/2H/70/6	70mm ² Tinned Copper Lug with 2 M6 holes at 16mm Hole Centres	10
SC/L/2H/70/8	70mm ² Tinned Copper Lug with 2 M8 holes at 16mm Hole Centres	10
SC/L/2H/95/6	95mm ² Tinned Copper Lug with 2 M6 holes at 16mm Hole Centres	10
SC/L/2H/95/8	95mm ² Tinned Copper Lug with 2 M8 holes at 16mm Hole Centres	10
SC/L/2H/120/6	120mm ² Tinned Copper Lug with 2 M6 holes at 16mm Hole Centres	10
SC/L/2H/120/8	120mm ² Tinned Copper Lug with 2 M8 holes at 16mm Hole Centres	10
SC/L/2H/120/10	120mm ² Tinned Copper Lug with 2 M10 holes at 16mm Hole Centres	10
SC/L/2H/150/6	150mm ² Tinned Copper Lug with 2 M6 holes at 16mm Hole Centres	10
SC/L/2H/150/8	150mm ² Tinned Copper Lug with 2 M8 holes at 16mm Hole Centres	10
SC/L/2H/185/6	185mm ² Tinned Copper Lug with 2 M6 holes at 16mm Hole Centres	10
SC/L/2H/185/8	185mm ² Tinned Copper Lug with 2 M8 holes at 16mm Hole Centres	10
SC/L/2H/240/6	240mm ² Tinned Copper Lug with 2 M6 holes at 16mm Hole Centres	10
SC/L/2H/240/8	240mm ² Tinned Copper Lug with 2 M8 holes at 16mm Hole Centres	10

1% Online Discount



www.cobracable.co.uk - Order now with the QR code

1% Online Discount



www.cobracable.co.uk - Order now with the QR code

Brazed 4-Hole Cable Lugs (Transformer)

4 Hole Cable Lugs. Brazed palm type. Standard hole centres 35mm across palm 25mm down palm



Part Number	Description	Pack Qty
SC/L/4H/50/8	50mmsq - M8 stud hole - Brazed Palm 4-Hole Transformer Lug - Hole Centres 35X25mm	10
SC/L/4H/50/10	50mmsq - M10 stud hole - Brazed Palm 4-Hole Transformer Lug - Hole Centres 35X25mm	10
SC/L/4H/50/12	50mmsq - M12 stud hole - Brazed Palm 4-Hole Transformer Lug - Hole Centres 35X25mm	10
SC/L/4H/70/8	70mmsq - M8 stud hole - Brazed Palm 4-Hole Transformer Lug - Hole Centres 35X25mm	10
SC/L/4H/70/10	70mmsq - M10 stud hole - Brazed Palm 4-Hole Transformer Lug - Hole Centres 35X25mm	10
SC/L/4H/70/12	70mmsq - M12 stud hole - Brazed Palm 4-Hole Transformer Lug - Hole Centres 35X25mm	10
SC/L/4H/95/8	95mmsq - M8 stud hole - Brazed Palm 4-Hole Transformer Lug - Hole Centres 35X25mm	10
SC/L/4H/95/10	95mmsq - M10 stud hole - Brazed Palm 4-Hole Transformer Lug - Hole Centres 35X25mm	10
SC/L/4H/95/12	95mmsq - M12 stud hole - Brazed Palm 4-Hole Transformer Lug - Hole Centres 35X25mm	10
SC/L/4H/120/8	120mmsq - M8 stud hole - Brazed Palm 4-Hole Transformer Lug - Hole Centres 35X25mm	10
SC/L/4H/120/10	120mmsq - M10 stud hole - Brazed Palm 4-Hole Transformer Lug - Hole Centres 35X25mm	10
SC/L/4H/120/12	120mmsq - M12 stud hole - Brazed Palm 4-Hole Transformer Lug - Hole Centres 35X25mm	10
SC/L/4H/150/8	150mmsq - M8 stud hole - Brazed Palm 4-Hole Transformer Lug - Hole Centres 35X25mm	10
SC/L/4H/150/10	150mmsq - M10 stud hole - Brazed Palm 4-Hole Transformer Lug - Hole Centres 35X25mm	10
SC/L/4H/150/12	150mmsq - M12 stud hole - Brazed Palm 4-Hole Transformer Lug - Hole Centres 35X25mm	10
SC/L/4H/185/8	185mmsq - M8 stud hole - Brazed Palm 4-Hole Transformer Lug - Hole Centres 35X25mm	10
SC/L/4H/185/10	185mmsq - M10 stud hole - Brazed Palm 4-Hole Transformer Lug - Hole Centres 35X25mm	10
SC/L/4H/185/12	185mmsq - M12 stud hole - Brazed Palm 4-Hole Transformer Lug - Hole Centres 35X25mm	10
SC/L/4H/240/8	240mmsq - M8 stud hole - Brazed Palm 4-Hole Transformer Lug - Hole Centres 35X25mm	10
SC/L/4H/240/10	240mmsq - M10 stud hole - Brazed Palm 4-Hole Transformer Lug - Hole Centres 35X25mm	10
SC/L/4H/240/12	240mmsq - M12 stud hole - Brazed Palm 4-Hole Transformer Lug - Hole Centres 35X25mm	10
SC/L/4H/300/8	300mmsq - M8 stud hole - Brazed Palm 4-Hole Transformer Lug - Hole Centres 35X25mm	10
SC/L/4H/300/10	300mmsq - M10 stud hole - Brazed Palm 4-Hole Transformer Lug - Hole Centres 35X25mm	10
SC/L/4H/300/12	300mmsq - M12 stud hole - Brazed Palm 4-Hole Transformer Lug - Hole Centres 35X25mm	10

Ordering made easy!

Scan the QR code opposite and order online from our full range of products

SCAN QR CODE >>



316 Grade Stainless Steel Lugs

Part Number	Description	Pack Qty
SC/L/SS/10/6	316 Grade (V4A/A4) stainless steel Lug - 10mmsq Cable Entry - M6	10
SC/L/SS/10/8	316 Grade (V4A/A4) stainless steel Lug - 10mmsq Cable Entry - M8	10
SC/L/SS/10/10	316 Grade (V4A/A4) stainless steel Lug - 10mmsq Cable Entry - M10	10
SC/L/SS/16/6	316 Grade (V4A/A4) stainless steel Lug - 16mmsq Cable Entry - M6	10
SC/L/SS/16/8	316 Grade (V4A/A4) stainless steel Lug - 16mmsq Cable Entry - M8	10
SC/L/SS/16/10	316 Grade (V4A/A4) stainless steel Lug - 16mmsq Cable Entry - M10	10
SC/L/SS/16/12	316 Grade (V4A/A4) stainless steel Lug - 16mmsq Cable Entry - M12	10
SC/L/SS/25/6	316 Grade (V4A/A4) stainless steel Lug - 25mmsq Cable Entry - M6	10
SC/L/SS/25/8	316 Grade (V4A/A4) stainless steel Lug - 25mmsq Cable Entry - M8	10
SC/L/SS/25/10	316 Grade (V4A/A4) stainless steel Lug - 25mmsq Cable Entry - M10	10
SC/L/SS/25/12	316 Grade (V4A/A4) stainless steel Lug - 25mmsq Cable Entry - M12	10
SC/L/SS/35/6	316 Grade (V4A/A4) stainless steel Lug - 35mmsq Cable Entry - M6	10
SC/L/SS/35/8	316 Grade (V4A/A4) stainless steel Lug - 35mmsq Cable Entry - M8	10
SC/L/SS/35/10	316 Grade (V4A/A4) stainless steel Lug - 35mmsq Cable Entry - M10	10
SC/L/SS/35/12	316 Grade (V4A/A4) stainless steel Lug - 35mmsq Cable Entry - M12	10
SC/L/SS/50/6	317 Grade (V4A/A4) stainless steel Lug - 50mmsq Cable Entry - M6	10
SC/L/SS/50/8	317 Grade (V4A/A4) stainless steel Lug - 50mmsq Cable Entry - M8	10
SC/L/SS/50/10	317 Grade (V4A/A4) stainless steel Lug - 50mmsq Cable Entry - M10	10
SC/L/SS/50/12	317 Grade (V4A/A4) stainless steel Lug - 50mmsq Cable Entry - M12	10
SC/L/SS/70/6	317 Grade (V4A/A4) stainless steel Lug - 70mmsq Cable Entry - M6	10
SC/L/SS/70/8	317 Grade (V4A/A4) stainless steel Lug - 70mmsq Cable Entry - M8	10
SC/L/SS/70/10	317 Grade (V4A/A4) stainless steel Lug - 70mmsq Cable Entry - M10	10
SC/L/SS/70/12	317 Grade (V4A/A4) stainless steel Lug - 70mmsq Cable Entry - M12	10
SC/L/SS/95/6	316 Grade (V4A/A4) stainless steel Lug - 95mmsq Cable Entry - M6	10
SC/L/SS/95/8	316 Grade (V4A/A4) stainless steel Lug - 95mmsq Cable Entry - M8	10
SC/L/SS/95/10	316 Grade (V4A/A4) stainless steel Lug - 95mmsq Cable Entry - M10	10
SC/L/SS/95/12	316 Grade (V4A/A4) stainless steel Lug - 95mmsq Cable Entry - M12	10
SC/L/SS/95/14	316 Grade (V4A/A4) stainless steel Lug - 95mmsq Cable Entry - M14	10
SC/L/SS/95/16	316 Grade (V4A/A4) stainless steel Lug - 95mmsq Cable Entry - M16	10
SC/L/SS/120/6	316 Grade (V4A/A4) stainless steel Lug - 120mmsq Cable Entry - M6	10
SC/L/SS/120/8	316 Grade (V4A/A4) stainless steel Lug - 120mmsq Cable Entry - M8	10
SC/L/SS/120/10	316 Grade (V4A/A4) stainless steel Lug - 120mmsq Cable Entry - M10	10
SC/L/SS/120/12	316 Grade (V4A/A4) stainless steel Lug - 120mmsq Cable Entry - M12	10
SC/L/SS/120/14	316 Grade (V4A/A4) stainless steel Lug - 120mmsq Cable Entry - M14	10
SC/L/SS/120/16	316 Grade (V4A/A4) stainless steel Lug - 120mmsq Cable Entry - M16	10
SC/L/SS/150/6	316 Grade (V4A/A4) stainless steel Lug - 150mmsq Cable Entry - M6	10
SC/L/SS/150/8	316 Grade (V4A/A4) stainless steel Lug - 150mmsq Cable Entry - M8	10
SC/L/SS/150/10	316 Grade (V4A/A4) stainless steel Lug - 150mmsq Cable Entry - M10	10
SC/L/SS/150/12	316 Grade (V4A/A4) stainless steel Lug - 150mmsq Cable Entry - M12	10
SC/L/SS/150/14	316 Grade (V4A/A4) stainless steel Lug - 150mmsq Cable Entry - M14	10
SC/L/SS/150/16	316 Grade (V4A/A4) stainless steel Lug - 150mmsq Cable Entry - M16	10
SC/L/SS/185/6	316 Grade (V4A/A4) stainless steel Lug - 185mmsq Cable Entry - M6	10
SC/L/SS/185/8	316 Grade (V4A/A4) stainless steel Lug - 185mmsq Cable Entry - M8	10
SC/L/SS/185/10	316 Grade (V4A/A4) stainless steel Lug - 185mmsq Cable Entry - M10	10
SC/L/SS/185/12	316 Grade (V4A/A4) stainless steel Lug - 185mmsq Cable Entry - M12	10
SC/L/SS/185/14	316 Grade (V4A/A4) stainless steel Lug - 185mmsq Cable Entry - M14	10
SC/L/SS/185/16	316 Grade (V4A/A4) stainless steel Lug - 185mmsq Cable Entry - M16	10
SC/L/SS/240/6	316 Grade (V4A/A4) stainless steel Lug - 240mmsq Cable Entry - M6	10
SC/L/SS/240/8	316 Grade (V4A/A4) stainless steel Lug - 240mmsq Cable Entry - M8	10
SC/L/SS/240/10	316 Grade (V4A/A4) stainless steel Lug - 240mmsq Cable Entry - M10	10
SC/L/SS/240/12	316 Grade (V4A/A4) stainless steel Lug - 240mmsq Cable Entry - M12	10
SC/L/SS/240/14	316 Grade (V4A/A4) stainless steel Lug - 240mmsq Cable Entry - M14	10
SC/L/SS/240/16	316 Grade (V4A/A4) stainless steel Lug - 240mmsq Cable Entry - M16	10



1% Online Discount

1% Online Discount

www.cobracable.co.uk - Order now with the QR code

www.cobracable.co.uk - Order now with the QR code

Solid Copper Lugs and Butt Splices

- Bell Mouth for easy cable entry on lugs
- Inspection hole to check the cable is correctly entered
- All terminals are identified on the palm with cable size and stud size to ensure correct selection
- Manufactured to match cables made to BS 6360
- Plated to BS 1872:1974
- Made from 99.50 pure Copper

Part Number	Description	Pack Qty
SC/L/10/6	Solid Copper Lug for 10mm ² Cable with hole for 6mm stud	100
SC/L/10/8	Solid Copper Lug for 10mm ² Cable with hole for 8mm stud	100
TOP SELLER! SC/L/10/10	Solid Copper Lug for 10mm ² Cable with hole for 10mm stud	100
SC/L/16/6	Solid Copper Lug for 16mm ² Cable with hole for 6mm stud	100
SC/L/16/8	Solid Copper Lug for 16mm ² Cable with hole for 8mm stud	100
SC/L/16/10	Solid Copper Lug for 16mm ² Cable with hole for 10mm stud	100
SC/L/16/12	Solid Copper Lug for 16mm ² Cable with hole for 12mm stud	100
SC/L/25/6	Solid Copper Lug for 25mm ² Cable with hole for 6mm stud	100
TOP SELLER! SC/L/25/8	Solid Copper Lug for 25mm ² Cable with hole for 8mm stud	100
SC/L/25/10	Solid Copper Lug for 25mm ² Cable with hole for 10mm stud	100
SC/L/25/12	Solid Copper Lug for 25mm ² Cable with hole for 12mm stud	100
SC/L/35/6	Solid Copper Lug for 35mm ² Cable with hole for 6mm stud	100
SC/L/35/8	Solid Copper Lug for 35mm ² Cable with hole for 8mm stud	100
TOP SELLER! SC/L/35/10	Solid Copper Lug for 35mm ² Cable with hole for 10mm stud	100
SC/L/35/12	Solid Copper Lug for 35mm ² Cable with hole for 12mm stud	100
SC/L/50/8	Solid Copper Lug for 50mm ² Cable with hole for 8mm stud	100
TOP SELLER! SC/L/50/10	Solid Copper Lug for 50mm ² Cable with hole for 10mm stud	100
SC/L/50/12	Solid Copper Lug for 50mm ² Cable with hole for 12mm stud	100
SC/L/70/8	Solid Copper Lug for 70mm ² Cable with hole for 8mm stud	100
TOP SELLER! SC/L/70/10	Solid Copper Lug for 70mm ² Cable with hole for 10mm stud	100
SC/L/70/12	Solid Copper Lug for 70mm ² Cable with hole for 12mm stud	100
SC/L/70/14	Solid Copper Lug for 70mm ² Cable with hole for 14mm stud	100
SC/L/95/8	Solid Copper Lug for 95mm ² Cable with hole for 8mm stud	100
SC/L/95/10	Solid Copper Lug for 95mm ² Cable with hole for 10mm stud	100
SC/L/95/12	Solid Copper Lug for 95mm ² Cable with hole for 12mm stud	100
SC/L/95/14	Solid Copper Lug for 95mm ² Cable with hole for 14mm stud	100
SC/L/120/10	Solid Copper Lug for 120mm ² Cable with hole for 10mm stud	100
SC/L/120/12	Solid Copper Lug for 120mm ² Cable with hole for 12mm stud	100
SC/L/120/14	Solid Copper Lug for 120mm ² Cable with hole for 14mm stud	100
SC/L/150/12	Solid Copper Lug for 150mm ² Cable with hole for 12mm stud	100
SC/L/150/14	Solid Copper Lug for 150mm ² Cable with hole for 14mm stud	100
SC/L/185/16	Solid Copper Lug for 185mm ² Cable with hole for 16mm stud	100
SC/L/240/16	Solid Copper Lug for 240mm ² Cable with hole for 16mm stud	100
SC/L/300/16	Solid Copper Lug for 300mm ² Cable with hole for 16mm stud	100



Solid Copper Lugs and Butt Splices

- All terminals are identified on the palm with cable size and stud size to ensure correct selection
- Manufactured to match cables made to BS 6360
- Plated to BS 1872:1974
- Made from 99.50 pure Copper

Part Number	Description	Pack Qty
SC/BC/10	Solid Copper Butt Splice for 10mm ² cable	100
SC/BC/16	Solid Copper Butt Splice for 16mm ² cable	100
SC/BC/25	Solid Copper Butt Splice for 25mm ² cable	100
SC/BC/35	Solid Copper Butt Splice for 35mm ² cable	100
SC/BC/50	Solid Copper Butt Splice for 50mm ² cable	50
SC/BC/70	Solid Copper Butt Splice for 70mm ² cable	50
SC/BC/95	Solid Copper Butt Splice for 95mm ² cable	25
SC/BC/120	Solid Copper Butt Splice for 120mm ² cable	25
SC/BC/150	Solid Copper Butt Splice for 150mm ² cable	25
SC/BC/185	Solid Copper Butt Splice for 185mm ² cable	15
SC/BC/240	Solid Copper Butt Splice for 240mm ² cable	10
SC/BC/300	Solid Copper Butt Splice for 300mm ² cable	10



Crimping Tools

- Hand operated and hand held hydraulic types

Part Number	Description	Pack Qty
HT-No1	Hand Crimping Tool for standard pre-insulated crimps 0.5mm - 6mm	1
HT-No5	Hand Crimping Tool for tube type pre-insulated terminals 0.5mm - 6mm	1

Part Number	Description	Pack Qty
HT-No7	Handheld Crimping Tool for Lug Sizes 10mm ² to 120mm ²	1
HT-No9	Handheld hydraulic tool for crimps 10mm ² to 300mm ² . Hex Dies & Case	1



POPULAR PRODUCT!

POPULAR PRODUCT!

Ordering made easy!

Scan the QR code opposite and order online from our full range of products

SCAN QR CODE >>



1% Online Discount



www.cobracable.co.uk - Order now with the QR code

1% Online Discount



www.cobracable.co.uk - Order now with the QR code

• Non-shrinkable PVC sleeving in 100m hanks

Part Number	Description	Colour	Pack Qty
SL/2/GY/100	2mm	Green/Yellow	1
TOP SELLER! SL/3/GY/100	3mm	Green/Yellow	1
SL/3/BR/100	3mm	Brown	1
SL/3/BL/100	3mm	Blue	1
TOP SELLER! SL/4/GY/100	4mm	Green/Yellow	1
SL/4/BR/100	4mm	Brown	1
TOP SELLER! SL/4/BL/100	4mm	Blue	1
SL/5/GY/100	5mm	Green/Yellow	1
SL/6/GY/100	6mm	Green/Yellow	1
SL/8/BR/100	8mm	Brown	1
SL/8/BL/100	8mm	Blue	1
SL/8/GY/100	8mm	Green/Yellow	1
SL/10/GY/100	10mm	Green/Yellow	1
SL/10/BR/100	10mm	Brown	1
SL/10/BL/100	10mm	Blue	1



Own Branding Available



Buy 50 packs and receive a FREE stand

Own Branding Available

• Fixings for use with fire resistant type cables
• LSZH polyester coating

• Made from high grade chamfered copper strip
• Bare copper and other colours available to special order

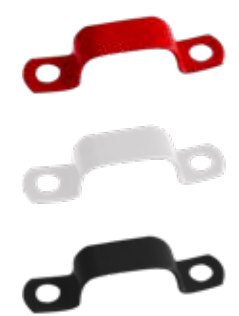
Part Number	Description	Colour	Pack Qty
P/RCHL20/50	RCHL Clip LSZH - Size 20	Red	50
P/RCHL22/50	RCHL Clip LSZH - Size 22	Red	50
P/RCHL24/50	RCHL Clip LSZH - Size 24	Red	50
P/RCHL26/50	RCHL Clip LSZH - Size 26 (AP6)	Red	50
P/RCHL28/50	RCHL Clip LSZH - Size 28 (AP7)	Red	50
P/RCL28W/50	RCHL Clip LSZH - Size 28 (AP7)	White	50
P/RCL28B/50	RCHL Clip LSZH - Size 28 (AP7)	Black	50
P/RCHL30/50	RCHL Clip LSZH - Size 30 (AP8)	Red	50
P/RCL30B/50	RCHL Clip LSZH - Size 30 (AP8)	Black	50
P/RCHL32/50	RCHL Clip LSZH - Size 32 (AP8)	Red	50
P/RCL32W/50	RCHL Clip LSZH - Size 32 (AP8)	White	50
P/RCL32B/50	RCHL Clip LSZH - Size 32 (AP8)	Black	50
P/RCHL34/50	RCHL Clip LSZH - Size 34 (AP9)	Red	50
P/RCL34W/50	RCHL Clip LSZH - Size 34 (AP9)	White	50
P/RCL34B/50	RCHL Clip LSZH - Size 34 (AP9)	Black	50
P/RCHL37/50	RCHL Clip LSZH - Size 37 (AP11)	Red	50
P/RCL37W/50	RCHL Clip LSZH - Size 37 (AP11)	White	50
P/RCL37B/50	RCHL Clip LSZH - Size 37 (AP11)	Black	50
P/RCHL40/50	RCHL Clip LSZH - Size 40	Red	50
P/RCHL43/50	RCHL Clip LSZH - Size 43	Red	50



For Cable Selection Chart please see bottom of this page

*Bulk Price on 50 Packs

Part Number	Description	Colour	Pack Qty
P/RSFL202/50	RSFL Saddle LSZH - Size 202	Red	50
P/RSFL222/50	RSFL Saddle LSZH - Size 222	Red	50
P/RSFL242/50	RSFL Saddle LSZH - Size 242	Red	50
P/RSFL272/50	RSFL Saddle LSZH - Size 272 (AP6)	Red	50
P/RSFL302/50	RSFL Saddle LSZH - Size 302 (AP7)	Red	50
P/RSFL302W/50	RSFL Saddle LSZH - Size 302 (AP7)	White	50
P/RSFL342/50	RSFL Saddle LSZH - Size 342 (AP8 & 9 & 10)	Red	50
P/RSFL342W/50	RSFL Saddle LSZH - Size 342 (AP8 & 9 & 10)	White	50
P/RSFL382/50	RSFL Saddle LSZH - Size 382	Red	50
P/RSFL422/50	RSFL Saddle LSZH - Size 422 (AP11)	Red	50



For Cable Selection Chart please see bottom of this page

*Bulk Price on 50 Packs

FP200 Clips and Saddles selection chart

Cable Size	LSF P Clips	LSF Saddles	Covered Cable Diameter
2L1.0	RCHL 26	RSFL272	6.4
2L1.5	RCHL 28	RSFL302	7.0
2L2.5	RCHL 30	RSFL343	7.9
2L4.0	RCHL 37	RSFL382	9.2
3L1.0	RCHL 28	RSFL302	7.1
3L1.5	RCHL 32	RSFL342	7.7
3L2.5	RCHL 34	RSFL342	8.8
4L1.0	RCHL 32	RSFL342	7.6
4L1.5	RCHL 34	RSFL342	8.3
4L2.5	RCHL 40	RSFL422	9.6

Pyro Clip Chart & Comparison			
Core/Cable	RCHL	AP	RSFL (Saddles)
2L1.0	RCHL26	AP6	272
2L1.5	RCHL28	AP7	302
2L2.5	RCHL32	AP8	342
2L4.0	RCHL37	AP10	342
3L1.0	RCHL28	AP7	302
3L1.5	RCHL30	AP8	342
3L2.5	RCHL34	AP9	342
4L1.0	RCHL30	AP8	342
4L1.5	RCHL34	AP9	342
4L2.5	RCHL37	AP11	442

1% Online Discount

www.cobracable.co.uk - Order now with the QR code

1% Online Discount

www.cobracable.co.uk - Order now with the QR code

Fire Retardant Clips and Fixings



18th Edition Compliant

- Clips and Fixings meet BS 7671:2015 amendments
- Clips simply screw to wall from inside trunking and arms bend round cable.
- Melting point 1000°C
- Screws fix directly into masonry without the use of plastic wall plugs. Ideal for the above clips or metal consumer units

Part Number	Description	Pack Qty
FR/TC/25/15/50	To suit 25mm x 15mm Trunking	50
FR/TC/38/20	To suit 38mm x wide Trunking	20
FR/TC/50/10	To suit 50mm x wide Trunking	10
FR/DFS/4.8/45/100	Direct Fixings Screw, no wall plug, 4.8 x 45	100

Fully Tested & Certified

- Tested for: 2 Hours
- Standard: EN 1366-3:2004



*Bulk Price on 100 Packs



Metal Wall Plugs



18th Edition Compliant

- For use where traditional Red or Brown Nylon wall plugs would not comply with current Fire Safety Regulations, in areas where fire considerations prohibit the use of plastic anchors.

Part Number	Size	Drill Hole Size	Pack Qty
FR/SA/5	M5 x 30	6mm Red Equivalent	100
FR/SA/6	M6 x 32	7mm Brown Equivalent	100

Fully Tested & Certified

- Tested for: 2 Hours
- Standard: EN 1366-3:2004



Steel Space Bar Saddles Coated



18th Edition Compliant

- Saddle designed to meet BS 7671:2015 amendments
- For use with PVC conduits
- White power coated for clean finish

Part Number	Description	Colour	Pack Qty
FR/SBS/20/W/100	20mm	White	100
FR/SBS/20/B/100	20mm	Black	100
FR/SBS/25/W/100	25mm	White	100
FR/SBS/25/B/100	25mm	Black	100

Fully Tested & Certified

- Tested for: 2 Hours
- Standard: EN 1366-3:2004



Fire Retardant Clips and Fixings



Part Number	Description	Pack Qty
FR/SBS/20/GALV/100	20mm Galv Steel Space Bar Saddle	100

SWA BW Industrial Glands

- 2 Part Brass Gland
- C/W 2 Glands, 2 Shrouds, 2 Tags and 2 Locknuts
- Standard: BS EN 50262

- Ingress Protection IP2X EN 60529
- Indoor Use
- Clamping - 2 Part Armour Lock

Own Branding Available



Part Number	Description	Pack Qty
GL/SWA/BW/20S/KIT	20mm Small	2 Per Kit
GL/SWA/BW/20/KIT	20mm	2 Per Kit
GL/SWA/BW/25/KIT	25mm	2 Per Kit
GL/SWA/BW/32/KIT	32mm	2 Per Kit
GL/SWA/BW/40/KIT	40mm	1 Per Kit
GL/SWA/BW/50/KIT	50mm	1 Per Kit
GL/SWA/BW/63/KIT	63mm	1 Per Kit
GL/SWA/BW/75/KIT	75mm	1 Per Kit

SWA CW Industrial Glands

- 3 Part Gland suitable for Steel Wired Armoured Cables
- C/W 2 Glands, 2 Shrouds, 2 Tags and 2 Locknuts
- Ingress Protection IP66 - Dust tight and protected against powerful water jets

- Provides an environmental seal on the outer sheath
- Standard: BS EN 50262
- Clamping - 2 Part Armour Lock

Own Branding Available



Part Number	Description	Pack Qty
GL/SWA/CW/20S/KIT	20mm Small	2 Per Kit
GL/SWA/CW/20/KIT	20mm	2 Per Kit
GL/SWA/CW/25/KIT	25mm	2 Per Kit
GL/SWA/CW/32/KIT	32mm	2 Per Kit
GL/SWA/CW/40/KIT	40mm	1 Per Kit
GL/SWA/CW/50/KIT	50mm	1 Per Kit

TRS Glands

Part Number	Description	Pack Qty
GL/TRS/20	20mm Brass TRS Gland c/w rubber seal	10
GL/TRS/25	25mm Brass TRS Gland c/w rubber seal	10



Brass Earthing Nut

Part Number	Description	Pack Qty
EN/20/2	20mm Brass	1
EN/25/2	25mm Brass	1
EN/32/2	32mm Brass	1



Hex Key Wrench for Earth Nuts

Part Number	Description	Pack Qty
EN/K/20	2mm	1
EN/K/25	3mm	1
EN/K/32	4mm	1



Earth Rod and Accessories

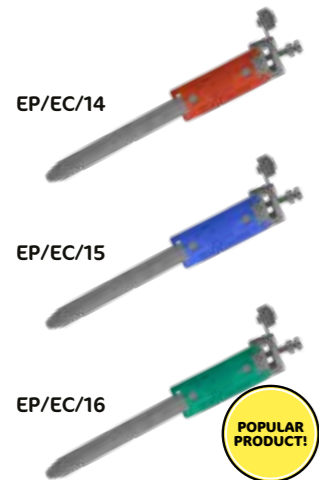


- High Tensile Low Carbon Steel
- Copper bonded thickness is 25 microns
- 5/8" threaded for extension purposes
- Both rods can be manually or power driven

Part Number	Description	Pack Qty
EP/ER3/8	3/8 x 4" Copper Bonded Earth Rod can be driven manually or power driver -Copper bonded thickness 25 microns	1
EP/ER5/8	5/8 x 4" Copper Bonded Earth Rod can be driven - threaded - manually or power driver - Copper Bonded thickness 25 microns	1
EP/EA/ER3/8	3/8" Earth Rod Brass Clamp - Machined - Brass	1
EP/EA/ER5/8	5/8" Earth Rod Clamp - Standard - Brass	1
EP/EA/ECOUS/8	5/8" Earth Rod External Coupler	1
EP/EA/DRS5/8	5/8" Driving Stud	1
EP/EP/280	Earth Pit- Composite - size 280mm x 185mm	1
EP/CB	Earth Connection Box	1



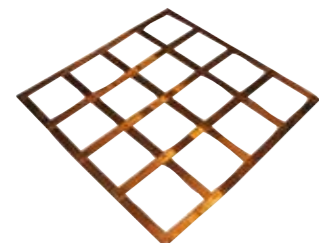
Earth Clamps



- Standard BS 951:2009
- Pipe Sizes 12mm - 32mm
- Heavy Duty
- EC/14: For use in dry conditions
- EC/15: For use in all conditions
- EC/16: For use in all conditions

Part Number	Description	Colour	Pack Qty
EP/EC/14	Earth Clamp 14 for use in dry conditions size = 135mm with 1 x 10mm ² lug	Red	1
EP/EC/15	Earth Clamp 15 for use in dry conditions size = 135mm with 1 x 10mm ² lug	Blue	1
EP/EC/16	Earth Clamp 16 for use in dry conditions size = 135mm with 1 x 10mm ² lug	Green	1

Lattice Earth Mat



Part Number	Description	Pack Qty
EB/ER/MAT/600	LATTICE EARTH MAT 600mm x 600mm	1
EB/ER/MAT/900	LATTICE EARTH MAT 900mm x 900mm	1

Female Bush

Part Number	Description	Pack Qty
BR/F/BUSH/20	Female Brass Bushes 20mm	10
BR/F/BUSH/25	Female Brass Bushes 25mm	10
BR/F/BUSH/32	Female Brass Bushes 32mm	10
BR/F/BUSH/63	Female Brass Bushes 63mm	10
BR/F/BUSH/75	Female Brass Bushes 75mm	10
BR/F/BUSH/112	Female Brass Bushes 1 1/2 "	10
BR/F/BUSH/2	Female Brass Bushes 2"	10
BR/F/BUSH/212	Female Brass Bushes 2 1/2 "	10
BR/F/BUSH/3	Female Brass Bushes 3 "	10



Large Male Bush

Part Number	Description	Pack Qty
BR/M/BUSH/L/20	Large Male Brass Bush 20mm	10
BR/M/BUSH/L/25	Large Male Brass Bush 25mm	10
BR/M/BUSH/L/32	Large Male Brass Bush 32mm	10
BR/M/BUSH/L/63	Large Male Brass Bush 63mm	10
BR/M/BUSH/L/75	Large Male Brass Bush 75mm	10
BR/M/BUSH/L/112	Large Male Brass Bush 1 1/2 "	10
BR/M/BUSH/L/2	Large Male Brass Bush 2"	10
BR/M/BUSH/L/212	Large Male Brass Bush 2 1/2 "	10
BR/M/BUSH/L/3	Large Male Brass Bush 3"	10



Short Male Bush

Part Number	Description	Pack Qty
BR/M/BUSH/S/20	Short Male Brass Bush 20mm	10
BR/M/BUSH/S/25	Short Male Brass Bush 25mm	10
BR/M/BUSH/S/32	Short Male Brass Bush 32mm	10
BR/M/BUSH/S/63	Short Male Brass Bush 63mm	10
BR/M/BUSH/S/75	Short Male Brass Bush 75mm	10
BR/M/BUSH/S/112	Short Male Brass Bush 1 1/2 "	10
BR/M/BUSH/S/2	Short Male Brass Bush 2"	10
BR/M/BUSH/S/212	Short Male Brass Bush 2 1/2 "	10
BR/M/BUSH/S/3"	Short Male Brass Bush 3"	10



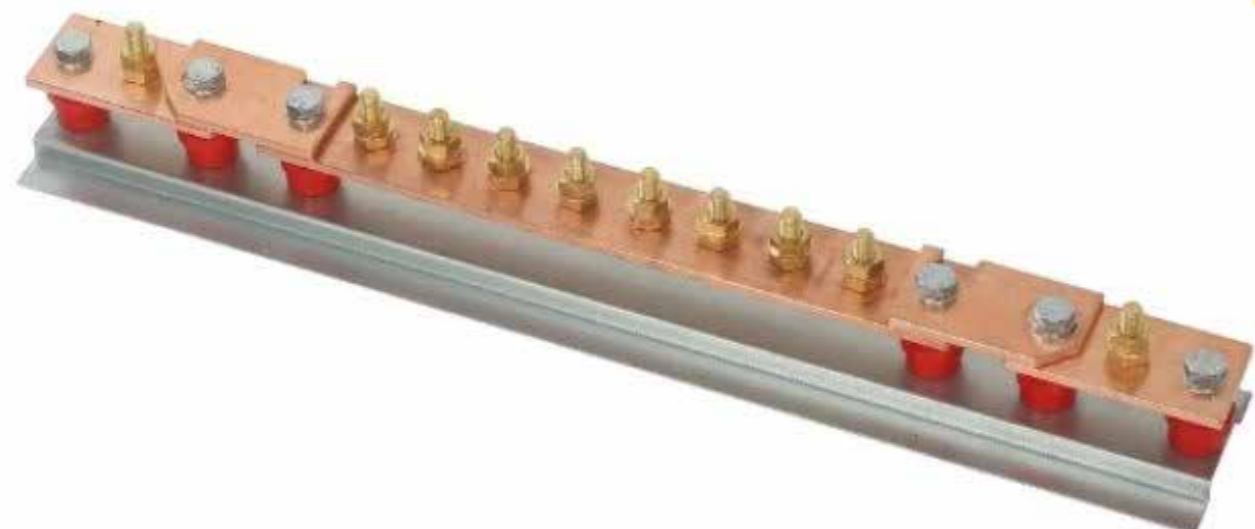
Brass Locknut

Part Number	Description	Pack Qty
BR/LN/20	Brass 20mm Lock Nut	10
BR/LN/25	Brass 25mm Lock Nut	10
BR/LN/32	Brass 32mm Lock Nut	10
BR/LN/40	Brass 40mm Lock Nut	10
BR/LN/50	Brass 50mm Lock Nut	10
BR/LN/21/2"	Brass 2 1/2" Lock Nut	10
BR/LN/3"	Brass 3" Lock Nut	10
BR/LN/63	Brass 63mm Lock Nut	10
BR/LN/75	Brass 75mm Lock Nut	10



Plain Earth Bar

Part Number	Description	Pack Qty	Part Number	Description	Pack Qty
EP/EB/4W/P	Plain Earth Bar 4 way. M10 x 1½" Hex Head Set Screw, Nuts and Washers.	1	EP/EB/28W/P	Plain Earth Bar 28 way. M10 x 1½" Hex Head Set Screw, Nuts and Washers.	1
EP/EB/6W/P	Plain Earth Bar 6 way. M10 x 1½" Hex Head Set Screw, Nuts and Washers.	1	EP/EB/30W/P	Plain Earth Bar 30 way. M10 x 1½" Hex Head Set Screw, Nuts and Washers.	1
EP/EB/8W/P	Plain Earth Bar 8 way. M10 x 1½" Hex Head Set Screw, Nuts and Washers.	1	EP/EB/32W/P	Plain Earth Bar 32 way. M10 x 1½" Hex Head Set Screw, Nuts and Washers.	1
EP/EB/10W/P	Plain Earth Bar 10 way. M10 x 1½" Hex Head Set Screw, Nuts and Washers.	1	EP/EB/34W/P	Plain Earth Bar 34 way. M10 x 1½" Hex Head Set Screw, Nuts and Washers.	1
EP/EB/12W/P	Plain Earth Bar 12 way. M10 x 1½" Hex Head Set Screw, Nuts and Washers.	1	EP/EB/36W/P	Plain Earth Bar 36 way. M10 x 1½" Hex Head Set Screw, Nuts and Washers.	1
EP/EB/14W/P	Plain Earth Bar 14 way. M10 x 1½" Hex Head Set Screw, Nuts and Washers.	1	EP/EB/38W/P	Plain Earth Bar 38 way. M10 x 1½" Hex Head Set Screw, Nuts and Washers.	1
EP/EB/16W/P	Plain Earth Bar 16 way. M10 x 1½" Hex Head Set Screw, Nuts and Washers.	1	EP/EB/40W/P	Plain Earth Bar 40 way. M10 x 1½" Hex Head Set Screw, Nuts and Washers.	1
EP/EB/18W/P	Plain Earth Bar 18 way. M10 x 1½" Hex Head Set Screw, Nuts and Washers.	1	EP/EB/42W/P	Plain Earth Bar 42 way. M10 x 1½" Hex Head Set Screw, Nuts and Washers.	1
EP/EB/20W/P	Plain Earth Bar 20 way. M10 x 1½" Hex Head Set Screw, Nuts and Washers.	1	EP/EB/44W/P	Plain Earth Bar 44 way. M10 x 1½" Hex Head Set Screw, Nuts and Washers.	1
EP/EB/22W/P	Plain Earth Bar 22 way. M10 x 1½" Hex Head Set Screw, Nuts and Washers.	1	EP/EB/46W/P	Plain Earth Bar 46 way. M10 x 1½" Hex Head Set Screw, Nuts and Washers.	1
EP/EB/24W/P	Plain Earth Bar 24 way. M10 x 1½" Hex Head Set Screw, Nuts and Washers.	1	EP/EB/48W/P	Plain Earth Bar 48 way. M10 x 1½" Hex Head Set Screw, Nuts and Washers.	1
EP/EB/26W/P	Plain Earth Bar 26 way. M10 x 1½" Hex Head Set Screw, Nuts and Washers.	1	EP/EB/50W/P	Plain Earth Bar 50 way. M10 x 1½" Hex Head Set Screw, Nuts and Washers.	1



Earth Bar and Disconnection Links

Bus Bar Size: 50mm x 5mm
 Amp: 677
 Bar: Hard Drawn Copper to BS EN 13601

Base: Plastic
 Fittings: M10 x 1½" Hex Head Set Screw, Nuts and Washers

Part Number	Description	Pack Qty	Part Number	Description	Pack Qty
EP/EB/4W/S	Single Link Earth Bar 4 way. M10 x 1½" Hex Head Set Screw, Nuts and Washers.	1	EP/EB/28W/S	Single Link Earth Bar 28 way. M10 x 1½" Hex Head Set Screw, Nuts and Washers.	1
EP/EB/6W/S	Single Link Earth Bar 6 way. M10 x 1½" Hex Head Set Screw, Nuts and Washers.	1	EP/EB/30W/S	Single Link Earth Bar 30 way. M10 x 1½" Hex Head Set Screw, Nuts and Washers.	1
EP/EB/8W/S	Single Link Earth Bar 8 way. M10 x 1½" Hex Head Set Screw, Nuts and Washers.	1	EP/EB/32W/S	Single Link Earth Bar 32 way. M10 x 1½" Hex Head Set Screw, Nuts and Washers.	1
EP/EB/10W/S	Single Link Earth Bar 10 way. M10 x 1½" Hex Head Set Screw, Nuts and Washers.	1	EP/EB/34W/S	Single Link Earth Bar 34 way. M10 x 1½" Hex Head Set Screw, Nuts and Washers.	1
EP/EB/12W/S	Single Link Earth Bar 12 way. M10 x 1½" Hex Head Set Screw, Nuts and Washers.	1	EP/EB/36W/S	Single Link Earth Bar 36 way. M10 x 1½" Hex Head Set Screw, Nuts and Washers.	1
EP/EB/14W/S	Single Link Earth Bar 14 way. M10 x 1½" Hex Head Set Screw, Nuts and Washers.	1	EP/EB/38W/S	Single Link Earth Bar 38 way. M10 x 1½" Hex Head Set Screw, Nuts and Washers.	1
EP/EB/16W/S	Single Link Earth Bar 16 way. M10 x 1½" Hex Head Set Screw, Nuts and Washers.	1	EP/EB/40W/S	Single Link Earth Bar 40 way. M10 x 1½" Hex Head Set Screw, Nuts and Washers.	1
EP/EB/18W/S	Single Link Earth Bar 18 way. M10 x 1½" Hex Head Set Screw, Nuts and Washers.	1	EP/EB/42W/S	Single Link Earth Bar 42 way. M10 x 1½" Hex Head Set Screw, Nuts and Washers.	1
EP/EB/20W/S	Single Link Earth Bar 20 way. M10 x 1½" Hex Head Set Screw, Nuts and Washers.	1	EP/EB/44W/S	Single Link Earth Bar 44 way. M10 x 1½" Hex Head Set Screw, Nuts and Washers.	1
EP/EB/22W/S	Single Link Earth Bar 22 way. M10 x 1½" Hex Head Set Screw, Nuts and Washers.	1	EP/EB/46W/S	Single Link Earth Bar 46 way. M10 x 1½" Hex Head Set Screw, Nuts and Washers.	1
EP/EB/24W/S	Single Link Earth Bar 24 way. M10 x 1½" Hex Head Set Screw, Nuts and Washers.	1	EP/EB/48W/S	Single Link Earth Bar 48 way. M10 x 1½" Hex Head Set Screw, Nuts and Washers.	1
EP/EB/26W/S	Single Link Earth Bar 26 way. M10 x 1½" Hex Head Set Screw, Nuts and Washers.	1	EP/EB/50W/S	Single Link Earth Bar 50 way. M10 x 1½" Hex Head Set Screw, Nuts and Washers.	1



1% Online Discount



www.cobracable.co.uk - Order now with the QR code

1% Online Discount



www.cobracable.co.uk - Order now with the QR code

Cable Hanger / Cable Run Clip



Part Number	Girder Size	Cable Pipe Size	Pack Qty
CR/8/10	8-12mm	10-11mm	25
CR/8/12	8-12mm	12-14mm	25
CR/8/15	8-12mm	15-18mm	25
CR/8/19	8-12mm	19-24mm	25
CR/8/25	8-12mm	25-30mm	25
CR/8/6	8-12mm	6-7mm	25
CR/8/7	8-12mm	8-9mm	25
CR/4/10	4-7mm	10-11mm	25
CR/4/12	4-7mm	12-14mm	25
CR/4/15	4-7mm	15-18mm	25
CR/4/19	4-7mm	19-24mm	25
CR/4/25	4-7mm	25-30mm	25
CR/4/6	4-7mm	6-7mm	25
CR/4/7	4-7mm	8-9mm	25
CR/2/10	2-4mm	10-11mm	25
CR/2/12	2-4mm	12-14mm	25
CR/2/15	2-4mm	15-18mm	25
CR/2/19	2-4mm	19-24mm	25
CR/2/25	2-4mm	25-30mm	25
CR/2/6	2-4mm	6-7mm	25
CR/2/7	2-4mm	8-9mm	25

Cable Run Adapter



Part Number	Girder Size	Cable Pipe Size	Pack Qty
CRA	12-20mm	nes clip	25

Purlin Clip



Part Number	Girder Size	Cable Pipe Size	Pack Qty
PC/VF/1	1.5-5mm	6	25
PC/VF/2	5-7mm	6	25
PC/ZP/1	1.5-2.5mm	7	25
PC/DCZ/1	3mm		25

Girder Clip



Part Number	Girder Size	Pack Qty
GC/BC/125	2-4mm	25
GC/BC/250	4-8mm	25
GC/BC/500	8-14mm	25
GC/BC/750	14-20mm	25

Rod Hanger



Part Number	Girder Size	Cable Pipe Size	Pack Qty
RH/VF/16	1.5-5mm	m6 ROD	25
RH/VF/18	1.5-5mm	m8 ROD	25
RH/VF/110	1.5-5mm	m10 ROD	25
RH/VF/26	5-7mm	m6 ROD	25
RH/VF/28	5-7mm	m8 ROD	25
RH/VF/210	5-7mm	m10 ROD	25

Ceiling Clip



Part Number	Girder Size	Pack Qty
CC/T2516	M6 x 16 Stud Size	25

Light Hanger



Part Number	Girder Size	Pack Qty
LH/MP1	Light Hanger	25

Dovetail Cable Hanger



Part Number	Girder Size	Pack Qty
DCH/HOL/2-SC	Dove Tail Size 12-16mm / 6mm Hole	25
DCH/HOL/2-LC	Dove Tail Size 17-22mm / 6mm Hole	25



Fibreglass Step



Fibreglass step perfect for low level working environments - such as painting or plastering.

- Conforms to BS EN 131
- Lightweight, Strong and Durable
- Non-slip feet, platform and treads
- Rated to 35,000 volts

Part Number	Description	Pack Qty
ST/FS/1	600 x 300mm	1

Ladder Clamp



Ladder Clamp BZP (ST/RC/1), for roof rack, are supplied as a pair and designed for you to ensure the safety and transportation of ladders on a vehicle. Locks ladders down tightly protecting them against high speed winds and reduces the risk of theft or accidents. Supplied in a poly bag with euro slot for display purposes.

- Lockable with Padlocks
- Good Resale Profit
- Easy Installation

Part Number	Description	Pack Qty
ST/RC/1	450 x 22 x 415mm	1

Fibreglass Step Ladder Treads

- Conforms to BS EN 131
- Lightweight, Strong and Durable
- Non-slip feet, platform and treads
- Rated to 35,000 volts
- Non-Conducting
- Minimum capacity of 150kg

Part Number	Description	Pack Qty
POPULAR PRODUCT! ST/4TREAD/1	Fibre Glass Steps to BS EN 131 4 Tread (3 usable Steps and 1 unusable step)	1
ST/5TREAD/1	Fibre Glass Steps to BS EN 131 5 Tread (4 usable Steps and 1 unusable step)	1
POPULAR PRODUCT! ST/6TREAD/1	Fibre Glass Steps to BS EN 131 6 Tread (5 usable Steps and 1 unusable step)	1
ST/8TREAD/1	Fibre Glass Steps to BS EN 131 8 Tread (7 usable Steps and 1 unusable step)	1
ST/10TREAD/1	Fibre Glass Steps to BS EN 131 10 Tread (9 usable Steps and 1 unusable step)	1



ST/4TREAD/1 ST/5TREAD/1 ST/6TREAD/1 ST/8TREAD/1 ST/10TREAD/1

Conduit Bender & Accessories

Conduit Bender with 20/25 & 32mm Formers

Code	Size
CB/25/32/1	Bender + 3 alu formers

Includes all parts and ready to work.

- Formers: 20, 25 and 32mm
 Material: Steel
 Formers: Aluminium
 Compatible: Parts compatible with all leading brands.



Conduit Bender with 20 & 25mm Formers

Code	Size
CB/20/25/1	Bender + 2 alu formers

Includes all parts and ready to work.

- Formers: 20 and 25mm
 Material: Steel
 Formers: Aluminium
 Compatible: Parts compatible with all leading brands.

Code	Size	
CB/ACC/F/20/1	20mm Former	
CB/ACC/F/25/1	25mm Former	
CB/ACC/F/32/1	32mm Former	
CB/ACC/FP/1	Former Pin	
CB/ACC/GR/1	Grooved Roller	
CB/ACC/PVJ/SET	Pipe Vice Jaws	
CB/ACC/PV/1	Pipe Vice	

Code	Size	
CB/ACC/GRP/1	Grooved Roller Pin	
CB/ACC/SBH/1	Stop Bar Holder	
CB/ACC/SB/1	Stop Bar	
CB/ACC/SPC/1	Safety Pin & Chain	
CB/ACC/TS/1	Tube Stop	
CB/ACC/RC/1	Retaining Clip	

Stock & Die Sets

20 & 25mm Includes: 2 Dies, 2 Guides
 25 & 32mm Includes: 2 Dies, 2 Guides - Larger Set to accommodate large dies

Part Number	Description	Pack Qty
DS/20/25/1	20mm & 25mm	2 Per Kit
DS/25/32/1	25mm & 32mm	2 Per Kit



Metal Cutting Compound

Usage: Paste to ease metal work and increase tool life when cutting, drilling & tapping etc.

Contents: Molybdenum disulphide, sulphur, phosphorus & petroleum
 Temp Range: Drop point 55°C

Part Number	Description	Pack Qty
AB/ACC/MCC/450G	450G	2 Per Kit



Steel Flexible Conduit - Galvanised



- Galvanised Steel Helically Wound
- Good Strength with Flexibility
- IP40
- Temp Range -50°C to +200°C

Part Number	Description	Pack Qty
FC/GALV/20/10	20mm Galvanised Flexible Conduit - 10m Reel	10m
FC/GALV/20/25	20mm Galvanised Flexible Conduit - 25m Reel	25m
FC/GALV/20/50	20mm Galvanised Flexible Conduit - 50m Reel	50m
FC/GALV/25/10	25mm Galvanised Flexible Conduit - 10m Reel	10m
FC/GALV/25/25	25mm Galvanised Flexible Conduit - 25m Reel	25m
FC/GALV/25/50	25mm Galvanised Flexible Conduit - 50m Reel	50m

Flexible Conduit - Galvanised - PVC Coated



- Galvanised Steel Helically Wound with Black PVC coating
- Good Strength with Flexibility
- IP54
- Temp Range -15°C to +70°C

Part Number	Description	Colour	Pack Qty
FC/GALV/PVC/20/10	20mm x 10m	Black Coating	10m
FC/GALV/PVC/20/25	20mm x 25m	Black Coating	25m
FC/GALV/PVC/20/50	20mm x 50m	Black Coating	50m
FC/GALV/PVC/25/10	25mm x 10m	Black Coating	10m
FC/GALV/PVC/25/25	25mm x 25m	Black Coating	25m
FC/GALV/PVC/25/50	25mm x 50m	Black Coating	50m
FC/GALV/PVC/32/10	32mm x 10m	Black Coating	10m
FC/GALV/PVC/32/25	32mm x 25m	Black Coating	25m
FC/GALV/PVC/40/10	40mm x 10m	Black Coating	10m
FC/GALV/PVC/40/25	40mm x 25m	Black Coating	25m
FC/GALV/PVC/50/10	50mm x 10m	Black Coating	10m
FC/GALV/PVC/50/25	50mm x 25m	Black Coating	25m

Adaptors - Brass Nickel Plated - Fixed and Swivel



Fixed



Swivel

Part Number	Description	Pack Qty
FC/ADAPT/20/F	20mm Adaptor for 20mm Flexible Conduit - Fixed	1
FC/ADAPT/20/S	20mm Adaptor for 20mm Flexible Conduit - Swivel	1
FC/ADAPT/25/F	25mm Adaptor for 20mm Flexible Conduit - Fixed	1
FC/ADAPT/25/S	25mm Adaptor for 20mm Flexible Conduit - Swivel	1
FC/ADAPT/32/F	32mm Adaptor for 20mm Flexible Conduit - Fixed	1
FC/ADAPT/32/S	32mm Adaptor for 20mm Flexible Conduit - Swivel	1
FC/ADAPT/40/F	40mm Adaptor for 20mm Flexible Conduit - Fixed	1
FC/ADAPT/40/S	40mm Adaptor for 20mm Flexible Conduit - Swivel	1
FC/ADAPT/50/F	50mm Adaptor for 20mm Flexible Conduit - Fixed	1
FC/ADAPT/50/S	50mm Adaptor for 20mm Flexible Conduit - Swivel	1

Contractor Packs - PVC



Includes: 10m corrugated conduit, 10 connectors.
Material: PVC Black

Construction: Smooth inner surface, flexible, twistable in vertical and axial direction.

Part Number	Description	Colour	Pack Qty
FC/CP/20/BLACK	20mm	Black	20mm
FC/CP/20/WHITE	20mm	White	25mm
FC/CP/25/BLACK	25mm	Black	25mm
FC/CP/25/WHITE	25mm	White	25mm

Adaptable Boxes - PVC

- All Round PVC boxes to IP44 & Square boxes to IP56
- All PVC boxes made from self-extinguishing ABS
- Square available as plain or with grommets

Part Number	Description	Pack Qty
AB/IP44/RD/G/65/35	IP44 Round 65 x 35	1
AB/IP44/RD/G/80/40	IP44 Round 80 x 40	1
AB/IP56/SQ/P/80/80/40	IP56 Square 80 x 80 x 40	1
AB/IP56/SQ/P/100/100/50	IP56 Square 100 x 100 x 50	1
AB/IP56/SQ/P/120/80/50	IP56 Square 120 x 80 x 50	1
AB/IP56/SQ/P/150/110/70	IP56 Square 150 x 110 x 70	1
AB/IP56/SQ/P/190/140/70	IP56 Square 190 x 140 x 70	1
AB/IP56/SQ/P/240/190/90	IP56 Square 240 x 190 x 90	1
AB/IP56/SQ/P/300/220/120	IP56 Square 300 x 220 x 120	1
AB/IP56/SQ/P/380/300/120	IP56 Square 380 x 300 x 120	1
AB/IP56/SQ/P/460/380/130	IP56 Square 460 x 380 x 130	1



Own Branding Available

TOP SELLER!

TOP SELLER!

TOP SELLER!

- Junction Box

Part Number	Description	Pack Qty
AB/IP56/SQ/P/100/100/50/B	Square Junction Box 100x100x50 - Black	1

Adaptable Boxes - Galvanised Steel

- Galvanised Adaptable Boxes
- Range goes from 3" x 3" x 1 1/2" to 6" x 6" x 3"
- All with Knock - outs
- Rubber Gaskets available

Part Number	Description	Pack Qty
AB/GALV/KO/3x3x1 1/2	3" x 3" x 1 1/2"	1
AB/GALV/KO/3x3x2	3" x 3" x 2"	1
AB/GALV/KO/4x4x1 1/2	4" x 4" x 1 1/2"	1
AB/GALV/KO/4x4x2	4" x 4" x 2"	1
AB/GALV/KO/4x4x3	4" x 4" x 3"	1
AB/GALV/KO/6x6x1 1/2	6" x 6" x 1 1/2"	1
AB/GALV/KO/6x6x2	6" x 6" x 2"	1
AB/GALV/KO/6x6x3	6" x 6" x 3"	1
AB/GALV/RG/3	3" x 3" (Round)	1
AB/GALV/RG/4	4" x 4" (Round)	1
AB/GALV/RG/6	6" x 6" (Round)	1



TOP SELLER!

TOP SELLER!

- Bi- component transparent polymer insulated gel

Part Number	Description	Pack Qty
JK/DUOGEL	2 x 500ml gel + mixing bowl. Pot life 10m	1



POPULAR PRODUCT!

Duogel

Testers

Part Number	Description	Pack Qty
MULTI/TESTER	Multi-Function Digital Tester	1
NEON/TESTER/S	Neon Tester Screwdriver -Small	1
NEON/TESTER/L	Neon Tester Screwdriver -190mm	1



MULTI/TESTER

NEON/TESTER

Angle Box



Part Number	Description	Pack Qty
ANG/BOX/20	20mm Angle Box	1
ANG/BOX/25	25mm Angle Box	1
ANG/BOX/32	32mm Angle Box	1

Terminal Box



Part Number	Description	Pack Qty
TER/BOX/20	20mm Terminal Box	1
TER/BOX/25	25mm Terminal Box	1
TER/BOX/32	32mm Terminal Box	1

Tee Box



Part Number	Description	Pack Qty
TEE/BOX/20	20mm Tee Box	1
TEE/BOX/25	25mm Tee Box	1
TEE/BOX/32	32mm Tee Box	1

Through Box



Part Number	Description	Pack Qty
THR/BOX/20	20mm Through Box	1
THR/BOX/25	25mm Through Box	1
THR/BOX/32	32mm Through Box	1

Intersection Box



Part Number	Description	Pack Qty
INT/BOX/20	20mm Intersection Box	1
INT/BOX/25	25mm Intersection Box	1
INT/BOX/32	32mm Intersection Box	1

U-Box



Part Number	Description	Pack Qty
U/BOX/20	20mm U-Box	1
U/BOX/25	25mm U-Box	1

Y Box



Part Number	Description	Pack Qty
Y/BOX/20	20mm Y Box	1
Y/BOX/25	25mm Y Box	1

Twin Through Box



Part Number	Description	Pack Qty
HTWIN/BOX/20	H Twin Through Box 20mm	1
HTWIN/BOX/25	H Twin Through Box 25mm	1

Terminal with Back Outlet



Part Number	Description	Pack Qty
TBO/20	Terminal with back outlet 20mm	1
TBO/25	Terminal with back outlet 25mm	1

Back Outlet Box



Part Number	Description	Pack Qty
BO/20	Back outlet box Galv	1

Distance Saddle



Part Number	Description	Pack Qty
FR/DS/20	20mm Distance Saddle	1
FR/DS/25	25mm Distance Saddle	1
FR/DS/32	32mm Distance Saddle	1

Inline Cable Joining Kit



Part Number	Description	Pack Qty
CJK/1	Inline Cable Joining Kit Type 4L16	1
CJK/2	Inline Cable Joining Kit Type 4L25	1
CJK/3	Inline Cable Joining Kit Type 4L50	1

1% Online Discount



www.cobracable.co.uk - Order now with the QR code

1% Online Discount



www.cobracable.co.uk - Order now with the QR code

Galvanised Lock Nut



Part Number	Description	Pack Qty
G/LN/20	Galvinised 20mm Lock Nut	10
G/LN/25	Galvinised 25mm Lock Nut	10
G/LN/32	Galvinised 32mm Lock Nut	10
G/LN/112	Galvinised 1 1/2" Lock Nut	10
G/LN/2	Galvinised 2" Lock Nut	10

Lock Ring



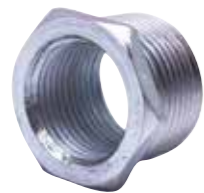
Part Number	Description	Pack Qty
ME/LR/20	Milled-Edge 20mm Lock Ring	10
ME/LR/25	Milled-Edge 25mm Lock Ring	10
ME/LR/32	Milled-Edge 32mm Lock Ring	10
ME/LR/112	Milled-Edge 1 1/2" Lock Ring	10
ME/LR/2	Milled-Edge 2" Lock Ring	10

Box Lid Cover



Part Number	Description	Pack Qty
2H/COV	2 Hole - Box Lid Cover	100
4H/COV	4H Hole - Box Lid Cover	100

Reducer



Part Number	Description	Pack Qty
G/RED/20-16	Reducer 20mm to 16mm	10
G/RED/25-20	Reducer 25mm to 20mm	10
G/RED/32-20	Reducer 32mm to 20mm	10
G/RED/32-25	Reducer 32mm to 25mm	10

Nipple



Part Number	Description	Pack Qty
G/NIP/20	20mm Screwed Nipple	10
G/NIP/25	25mm Screwed Nipple	10
G/NIP/32	32mm Screwed Nipple	10
G/NIP/112	1 1/2 Screwed Nipple	10
G/NIP/2	2" Screwed Nipple	10

Inspection Tee



Part Number	Description	Pack Qty
G/IT/20	20mm Inspection Tee	10
G/IT/25	25mm Inspection Tee	10

Inspection Bend & Elbow



Part Number	Description	Pack Qty
G/IB/20	20mm Inspection Bend	10
G/IB/25	25mm Inspection Bend	10
G/IE/20	20mm Inspection Elbow	10
G/IE/25	25mm Inspection Elbow	10

Galv Coupler



Part Number	Description	Pack Qty
G/SC/20	20mm Soild Coupler	10
G/SC/25	25mm Soild Coupler	10
G/SC/32	32mm Soild Coupler	10
G/SC/112	1 1/2" Soild Coupler	10
G/SC/2	2" Soild Coupler	10

Rod Connectors



Part Number	Description	Pack Qty
FX/RC/M6	Threaded Rod Connector M6	100
FX/RC/M8	Threaded Rod Connector M8	100
FX/RC/M10	Threaded Rod Connector M10	100
FX/RC/M12	Threaded Rod Connector M12	100



Catenary Wire and Accessories



- Galvanised Steel Wire
- 3mm Diameter made up of 7 strands

Available as pre-packed kit

Part Number	Description	Pack Qty
WR/KIT/1	Catenary Wire Kit c/w 1 x 30m coil + 1 x 4" Tensioner + 1 Ring Plate + 1 x Hook Plate + 10 Eyelets + 10 Rope Grips	1
WR/W/2/30	30m coil of 2mm Catenary Wire	1
WR/W/2/50	50m coil of 2mm Catenary Wire	1
WR/W/2/100	100m coil of 2mm Catenary Wire	1
WR/W/3/30	Catenary Wire - 3mm x 30m coil - Galv - 7 Strands	1 Roll
WR/W/3/50	Catenary Wire - 3mm x 50m coil - Galv - 7 Strands	1 Roll
WR/W/3/100	Catenary Wire - 3mm x 100m coil - Galv - 7 Strands	1 Roll
WR/RE/1	Eyelet for 3mm Catenary Wire	1
WR/RG/1	Rope Grip for 3mm Catenary Wire	1
WR/HP/1	Hook Plate for 3mm Catenary Wire	1
WR/CH/1	Carabiner Hook	1
WR/RP/1	Ring Plate for 3mm Catenary Wire	1
WR/ST/1	4" Strainer / Tensioner for 3mm Catenary Wire	1
WR/PFL/2/3M	Rope crimped with pre-formed loop 7 x 7 Strand 2mm (3 Meters)	1
WR/PFL/2/5M	Rope crimped with pre-formed loop 7 x 7 Strand 2mm (5 Meters)	1
WR/S/CB/1	Cable Blocker / Gripper 2.4mm - 3.2mm	1
WR/S/CB/2MM	Cable Blocker/Gripper 1.5-2mm	1

Part Identification



WR/RE/1 WR/RG/1 WR/HP/1 WR/CH/1 WR/RP/1 WR/ST/1 WR/PFL/2/3M & WR/PFL/2/5M WR/S/CB/1

Jack Chain



- BZP Galvanised, single link large diameter Jack Chain

Part Number	Description	Pack Qty
FX/JACKCHAIN/10M	Galvanised large link Jack Chain. Max load 7.5kg - 10m	1

Ordering made easy!

Scan the QR code opposite and order online from our full range of products

SCAN QR CODE >>



Terminal Strips

12 Way Terminal Strips

- Made from Polythene
- 400v
- "U" type
- White

Part Number	Description	Colour	Pack Qty
TS/12W/3/10/U	3amp x 12 way terminal strip	White	10
TS/12W/6/10/U	6amp x 12 way terminal strip	White	10
TS/12W/16/10/U	16amp x 12 way terminal strip	White	10
TS/12W/30/10/U	30amp x 12 way terminal strip	White	10
TS/12W/60/10/U	60amp x 12 way terminal strip	White	10



Lever Connectors

- Lever Connectors in 2,3 and 5 pole versions
- Accepts stranded, solid or flexible cables
- Re-usable
- Series 222

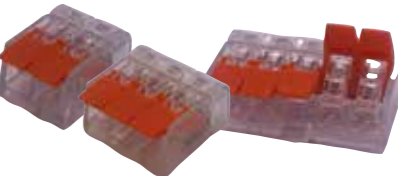
Part Number	Description	Pack Qty
PC/LC/2POLE/50	2 Pole Lever Connector	50
PC/LC/3POLE/50	3 Pole Lever Connector	50
PC/LC/5POLE/40	5 Pole Lever Connector	40



POPULAR PRODUCT!

Lever Connectors Quick Connection

Part Number	Description	Pack Qty
PC/LC/2POLE/W221	2 Pole Lever Connector Quick Connection	50
PC/LC/3POLE/W221	3 Pole Lever Connector Quick Connection	50
PC/LC/5POLE/W221	5 Pole Lever Connector Quick Connection	50



Push In Connectors

- Available in 2, 3*, 4, 6 and 8 pole (*Used with solid & stranded wire 1.5 - 6mm)
- Usage: Junction box, low voltage lighting, consumer units & power distribution
- Advantage: Re-usable, fast securing, transparent to see conductor is secure
- Series 773
- 32 Amp
- Used with solid & stranded Wire 1.5- 6mm² and is rated at 32 amp

Part Number	Description	Pack Qty
PC/PI/2CON/100	2 Conduit Push In Clear Connectors	100
PC/PI/3CON/50	3 Conduit Push In Clear Connectors	50
PC/PI/4CON/100	4 Conduit Push In Clear Connectors	100
PC/PI/6CON/50	6 Conduit Push In Clear Connectors	50
PC/PI/8CON/50	8 Conduit Push In Clear Connectors	50



Push Wire & Lever Connector Kit

- PC/LC/2POLE/ x 50
- PC/LC/3POLE/ x 50
- PC/LC/5POLE/ x 40
- PC/PI/2CON/100 x 50
- PC/PI/3CON/50 x 20
- PC/PI/4CON/100 x 20
- PC/PI/6CON/50 x 20
- PC/PI/8CON/50 x 20

Part Number	Description	Pack Qty
PW/KIT	Push Wire & Lever Connector Kit	1



Connector Box with Fittings (Choc Box)



- Inline plastic junction box 90mm x 50mm x 25mm
- Can be supplied empty or with either 3 way 6amp terminal strip, or 3 x 3 way Lever Connectors
- Complete with Cord Grips and Lid Fixing Screw

Part Number	Description	Pack Qty
JB/CHOC/E/1	Inline Plastic Connection box c/w Cable Grips and Lid Fixing Screw	1

POPULAR PRODUCT!
BULK PRICE AVAILABLE FOR 1000 Qty

Porcelain Connectors



Part Number	Description	Fixing Holes	Pack Qty
PC/153	15 Amp 3 Way	2 x 5mm	1
PC/52	5 Amp 2 Way	1 x 4mm	1
PC/152	15 Amp 2 Way	1 x 5mm	1
PC/51	5 Amp 1 Way	0	1
PC/151	15 Amp 1 Way	0	1
PC/53	5 Amp 3 Way	2 x 4mm	1
PC/302	30 Amp 2 Way	1 x 5mm	1
PC/303	30 Amp 3 Way	2 x 5mm	1
PC/301	30 Amp 1 Way	0	1

Terminal Earth Blocks



Material: Brass Casting
Finish: Nickel

Hole Size (conductor size):
EB4: 1 x 6.5mm (25mm), 3 x 5.5mm (16mm)
EB8: 2 x 6.5mm (25mm), 6 x 5.5mm (16mm)

Part Number	Description	Pack Qty
EP/EB4/1	4 Way	1
EP/EB8/1	8 Way	1

Earth Terminals



Material: Brass

Usage: Spares for terminal and adaptable boxes

Part Number	Description	Pack Qty
EP/ET/M4	M4 Earth Terminal - Brass	100

Insulated Connection Boxes



- 100 Amp Rating
- 5 way x 35mm² max. cable capacity
- Heavy Duty Casing
- Sealable lid to highlight tampering
- Single or Double Pole options

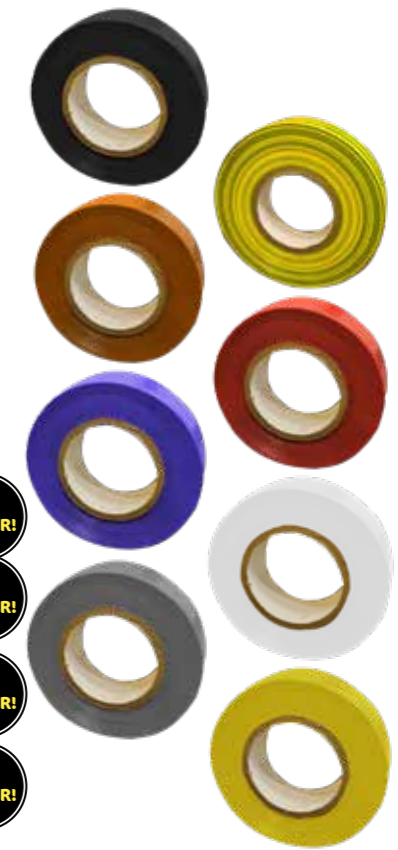
Part Number	Description	Pack Qty
JB/CB/SP	Single Pole - 100 amp 5 way x 35mm ²	1
JB/CB/DP	Double Pole - 100 amp 5 way x 35mm ²	1

PVC Insulation Tape

Material: Polyamide (Nylon)
Standard: BS3924 & IEC60454

Size: Width 19mm x 0.13mm thickness
x 20m or 33m lengths
Flame Retardant

Part Number	Description	Colour	Pack Qty
T/PVC/I/20B	19mm x 0.13mm x 20m	Black	1
T/PVC/I/20BR	19mm x 0.13mm x 20m	Brown	1
T/PVC/I/20BL	19mm x 0.13mm x 20m	Blue	1
T/PVC/I/20G	19mm x 0.13mm x 20m	Grey	1
T/PVC/I/20GY	19mm x 0.13mm x 20m	Green/Yellow	1
T/PVC/I/20R	19mm x 0.13mm x 20m	Red	1
T/PVC/I/20W	19mm x 0.13mm x 20m	White	1
T/PVC/I/20Y	19mm x 0.13mm x 20m	Yellow	1
T/PVC/I/33B	19mm x 0.13mm x 33m	Black	1
T/PVC/I/33BR	19mm x 0.13mm x 33m	Brown	1
T/PVC/I/33BL	19mm x 0.13mm x 33m	Blue	1
T/PVC/I/33G	19mm x 0.13mm x 33m	Grey	1
T/PVC/I/33GY	19mm x 0.13mm x 33m	Green/Yellow	1
T/PVC/I/33R	19mm x 0.13mm x 33m	Red	1
T/PVC/I/33W	19mm x 0.13mm x 33m	White	1
T/PVC/I/33Y	19mm x 0.13mm x 33m	Yellow	1



TOP SELLER!

TOP SELLER!

TOP SELLER!

TOP SELLER!

Self-Amalgamating Tape

Material: Polyisobutylene

Usage: Tapes amalgamate rapidly when applied under tension to provide a void free homogeneous insulation build up without the need for external pressure
Size: 19mm x 10m

Part Number	Description	Colour	Pack Qty
T/PVC/SAT	19mm x 10m	Black	1



Underground Warning Tape

Material: Linear Low Density Polyethylene

Size: 150mm x 365m
'Caution Electrical Cable Below'

Part Number	Description	Pack Qty
T/UWT	150mm x 365m - 'Caution Electrical Cable Below'	1



POPULAR PRODUCT!

Gaffer / Duct Tape

Material: Vinyl Cloth Reinforced
Size: 50mm Wide x 50m

Usage: This Tape has very high tack strength along with good temperature and UV stability.

Part Number	Description	Colour	Pack Qty
T/GT/B	50mm x 50m	Black	1
T/GT/G	50mm x 50m	Grey	1



POPULAR PRODUCT!

Galvanised Spray



- Galv Spray for corrosion prevention with excellent heat resistance and fast drying action
- Galv Spray has a Zinc content of 35% & Aluminium for a bright finish
- Temp range 150°C continues to 400°C intermittent.

Part Number	Description	Pack Qty
SP/GALV/400ML	Premium 400ml	1

Line Markers



- Line Marker: Durable, semi-permanent paint for use on hard surfaces and grass

Part Number	Description	Colour	Pack Qty
SP/LM/Blue	750ml	Blue	1
SP/LM/Black	750ml	Black	1
SP/LM/Green	750ml	Green	1
SP/LM/Orange	750ml	Orange	1
SP/LM/Red	750ml	Red	1
SP/LM/White	750ml	White	1
SP/LM/Yellow	750ml	Yellow	1

Grommets

Own Branding Available



- Grommets made from PVC
- Open and blind versions
- Quick Fit Open version available

Part Number	Description	Pack Qty
CG/O/16	16mm Open PVC Grommet	100
CG/O/20	20mm Open PVC Grommet	100
CG/O/25	25mm Open PVC Grommet	100
CG/O/32	32mm Open PVC Grommet	50
CG/O/38	38mm Open PVC Grommet	50
CG/O/50	50mm Open PVC Grommet	50
CG/B/16	16mm Blind PVC Grommet	100
CG/B/20	20mm Blind PVC Grommet	100
CG/B/25	25mm Blind PVC Grommet	100
CG/B/32	32mm Blind PVC Grommet	50
CG/B/38	38mm Blind PVC Grommet	50
CG/B/50	50mm Blind PVC Grommet	50
CG/QK/O/20	20mm Quick Fit Open Grommet	100
CG/QK/O/25	25mm Quick Fit Open Grommet	100
CG/QK/O/32	32mm Quick Fit Open Grommet	50

Grommet Strip



- Grommet Strip made from PE Natural colour

Part Number	Description	Pack Qty
CG/STRIP/1	1.0 to 1.6 thick material	10m
CG/STRIP/2	1.6 to 2.0 thick material	10m

Roofing Bolts & Nuts

- Roofing Bolts
- Zinc Plated with double slotted head
- Suitable for general fixing, cable tray, trunking, etc

- Manufactured to DIN specifications
- All bolts supplied with a Square Nut

Part Number	Description	Pack Qty
FX/RB/M6x12	M6 x 12mm	200
FX/RB/M6x16	M6 x 16mm	200
FX/RB/M6x20	M6 x 20mm	200
FX/RB/M6x25	M6 x 25mm	200
FX/RB/M6x30	M6 x 30mm	100
FX/RB/M6x40	M6 x 40mm	100
FX/RB/M6x50	M6 x 50mm	100



Combi Tray Bolt

- Nuts and Bolts for the easy installation of Cable Tray

Part Number	Description	Pack Qty
FX/CTB/M6x12/200	M6 x 12mm	200
FX/CTB/M6x16/200	M6 x 16mm	200
FX/CTB/M6x20/200	M6 x 20mm	200
FX/CTB/M6x25/200	M6 x 25mm	200



Plasterboard Fixings

Own Branding Available

- Drive Anchor Bolts
- Self drilling fixing for light and medium loads in plasterboard walls and ceilings
- Aluminium casting
- Supplied with 4.5mm x 35mm screw

- Hammer Plug:
- Material: Steel
- Usage: Hammer-in plug for plasterboard, No drilling needed, anchors itself when tightening the screw. Does not rotate on screwing.
- Application: For medium fix cavity wall.
- For woodscrews 6g - 10g

Part Number	Description	Pack Qty
FX/DA1/35MMSCREW/100	Drive Anchor 14mm x 28mm for Plasterboard fixing complete with 4.5mm x 35mm screw	100
FX/HP/4/30/200	Hammer Plug (Screw Included) 4 x 30	200

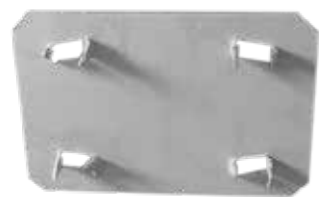


Spring Toggle

Part Number	Description	Pack Qty
FX/ST/M3/50	Spring Toggle M3 X 50	100
FX/ST/M5/50	Spring Toggle M5 X 50	100
FX/ST/M5/75	Spring Toggle M5 X 75	100
FX/ST/M6/50	Spring Toggle M6 X 50	100
FX/ST/M6/75	Spring Toggle M6 X 75	100



Cable Guard



- Protects Cables and Pipes from Nails, Screws or Drill damage
- NHBC approved
- Double secure fixing points
- 54mm x 80mm

Part Number	Description	Pack Qty
FX/SP/54/80/1	54mm x 80mm	1

Cable Spooler



- Features & Benefits:**
- Run cables single handed
 - Carry cables easily
 - Store up to 6 individual cables
 - Makes on site set up quicker
 - Folds flat in seconds
 - Steel construction
- Ideal for all working environments
 - Size flat 76 x 18.5 x 4.0 cm
- Kit consists of -**
- 5 Cable Clips
 - Large Non-Slip Feet
 - Additional Chain Support

Part Number	Description	Pack Qty
AC/CC	Cable Carrier Size 76 x 18.5 x 4.0 cm	1

PVC - U Conduit Solvent Cement



- Usage:** Gap filling solvent cement for jointing PVC-U pipe and fittings, by creating a chemical bond
- Cure Time:** Set 10-15 mins, Full cure 48 hours, temperature 0- 40°C
- Standards:** to BS4346: Part 3

Part Number	Description	Pack Qty
AC/SCSC	250ml	1

Lockout Essential Kit



A kit covering all essential including 2 padlocks, screwdriver, rewritable tags on plastic, Pen (for tags), MCB Universal Lockout, Mains Isolator lock out, 2 plastic key rings and a powder coated hasp with 12 holes. All supplied in a canvas zip pouch

Part Number	Description	Pack Qty
AC/LOKIT	Lockout Kit	1

Cable Protector



Part Number	Description	Pack Qty
CP/1C/1.8	Cable Protector 1.8m - 1 Channel	1
CP/1C/9	Cable Protector 9m - 1 Channel	1
CP/3C/1.8	Cable Protector 1.8m - 3 Channel	1
CP/3C/9	Cable Protector 9m - Channel	1

Channel Drive Over Cable Protector



Part Number	Description	Pack Qty
CP/DO	2 Channel Drive Over Cable Protector	1

Conduit Box Screws, Nuts and Washers - Brass

- M4 Pan Head slotted Brass Screw to DIN 85
- 2BA Round Head slotted Brass Screw to BS 57

Part Number	Description	Pack Qty
FX/PH/M4/6/100	M4 x 6	100
FX/PH/M4/8/100	M4 x 8	100
FX/PH/M4/10/100	M4 x 10	100
FX/PH/M4/12/100	M4 x 12	100
FX/PH/M4/16/100	M4 x 16	100
FX/PH/M4/20/100	M4 x 20	100
FX/PH/M4/25/100	M4 x 25	100
FX/PH/M4/30/100	M4 x 30	100
FX/PH/M4/35/100	M4 x 35	100
FX/PH/M4/40/100	M4 x 40	100
FX/PH/M4/50/100	M4 x 50	100
FX/PH/M4/60/100	M4 x 60	100
FX/PH/M4/75/100	M4 x 75	100
FX/2BA/1/100	2BA x 1" Slotted Round Head Screw	100
FX/2BA/2/100	2BA x 2" Slotted Round Head Screw	100

TOP SELLER!

TOP SELLER!



3.5mm Socket Screws & Extension Stud

- Engineering Screws made from Mild Steel
- Engineering Screws are quality Nickel Plated
- Stud extensions made from Brass

Part Number	Description	Pack Qty
FX/MS/M3.5/12/100	M3.5 x 12	100
FX/MS/M3.5/16/100	M3.5 x 16	100
FX/MS/M3.5/20/100	M3.5 x 20	100
FX/MS/M3.5/25/100	M3.5 x 25	100
FX/MS/M3.5/30/100	M3.5 x 30	100
FX/MS/M3.5/35/100	M3.5 x 35	100
FX/MS/M3.5/40/100	M3.5 x 40	100
FX/MS/M3.5/50/100	M3.5 x 50	100
FX/MS/M3.5/60/100	M3.5 x 60	100
FX/MS/M3.5/75/100	M3.5 x 75	100
FX/MS/M3.5/100/100	M3.5 x 100	100

Part Number	Description	Pack Qty
FX/MS/ES/M3.5/50/10	M3.5mm x 50mm Extension Stud for Sockets etc - Brass	10

Part Number	Description	Pack Qty
FX/MS/FH/3.5/100	M3.5mm x 50mm Socket Pin Flat	100



Capping / Washered Nails

Material: Hardened Steel

Finish: Bright Zinc

Part Number	Description	Pack Qty
FX/MNW/25/100	25mm	100
FX/MNW/30/100	30mm	100
FX/MNW/35/100	35mm	100

TOP SELLER!



Pozi Countersunk Woodscrew - Twinthread - BZP

- Twinthread Woodscrews
- Made from C1022, case hardened
- Finish: Bright Zinc Plated

Part Number	Description	Pack Qty
FX/WS/06075	No 6 x ¾"	200
FX/WS/06100	No 6 x 1"	200
FX/WS/06125	No 6 x 1 ¼"	200
FX/WS/06150	No 6 x 1 ½" w	200
FX/WS/08050	No 8 x ½"	200
FX/WS/08075	No 8 x ¾"	200
FX/WS/08100	No 8 x 1"	200
FX/WS/08125	No 8 x 1 ¼"	200
FX/WS/08150	No 8 x 1 ½"	200
FX/WS/08175	No 8 x 1 ¾"	200
FX/WS/08200	No 8 x 2"	200
FX/WS/08300	No 8 x 3"	100
FX/WS/10100	No 10 x 1"	200
FX/WS/10125	No 10 x 1 ¼"	200
FX/WS/10150	No 10 x 1 ½"	200
FX/WS/10175	No 10 x 1 ¾"	200
FX/WS/10200	No 10 x 2"	200
FX/WS/10250	No 10 x 2 ½"	100
FX/WS/10300	No 10 x 3"	100
FX/WS/10350	No 10 x 3 ½"	100
FX/WS/10400	No 10 x 4"	100
FX/WS/12150	No 12 x 1 ½"	200
FX/WS/12200	No 12 x 2"	100
FX/WS/12300	No 12 x 3"	100
FX/WS/12350	No 12 x 3 ½"	100
FX/WS/12400	No 12 x 4"	100



TOP SELLER!

TOP SELLER!

TOP SELLER!

Wall Plugs



Part Number	Description	Colour	Pack Qty
AC/WP/YELLOW	Drill Size 5.0mm (25mm length)	Yellow	1000
AC/WP/RED	Drill Size 5.5mm (30mm length)	Red	1000
AC/WP/BROWN	Drill Size 7.0mm (35mm length)	Brown	1000

TOP SELLER!

Metal Plugs on page 38

Pozi, Hex & Pan Drill Screw Shallow Head



- Orbix Type Shallow Head Screw

Part Number	Description	Pack Qty
FX/PP/4.8/16/200	Pozi Pan Drill Screw Shallow Head 4.8mm x 16mm	200
FX/PP/4.8/35/200	Pozi Pan Drill Screw Shallow Head 4.8mm x 35mm	200
FX/PP/5.5/20/200	Pozi Pan Drill Screw Shallow Head 5.5mm x 20mm	200
FX/PP/5.5/40/200	Pozi Pan Drill Screw Shallow Head 5.5mm x 40mm	200
FX/HH/5.5/25/200	Hex Head Drill Screw 5.5mm x 25mm	200

Washers (Penny, Steel & Square)

- Penny Washers BZP to DIN9021
- Steel Washers to DIN125
- Square Plates to DIN127, BS 4464

Part Number	Description	Pack Qty
FX/PW/M5/25/100	Penny Washer - M5 x 25mm	100
FX/PW/M6/25/100	Penny Washer - M6 x 25mm	100
FX/PW/M8/25/100	Penny Washer - M8 x 25mm	100
FX/PW/M10/25/100	Penny Washer - M10 x 25mm	100
FX/SW/M4/100	Steel Washer M4 DIN125	100
FX/SW/M5/100	Steel Washer M5 DIN125	100
FX/SW/M6/100	Steel Washer M6 DIN125	100
FX/SW/M8/100	Steel Washer M8 DIN125	100
FX/SW/M10/100	Steel Washer M10 DIN125	100
FX/SP/M6/3/100	Square Plate - M6 x 3mm	100
FX/SP/M8/3/100	Square Plate - M8 x 3mm	100
FX/SP/M10/3/100	Square Plate - M10 x 3mm	100
FX/SP/M12/3/100	Square Plate - M12 x 3mm	100
FX/SP/M6/5/100	Square Plate - M6 x 5mm	100
FX/SP/M8/5/100	Square Plate - M8 x 5mm	100
FX/SP/M10/5/100	Square Plate - M10 x 5mm	100
FX/SP/M12/5/100	Square Plate - M12 x 5mm	100

TOP SELLER!

Shakeproof Washer - BZP

Part Number	Description	Pack Qty
FX/SPW/M4	M4 SHAKEPROOF WASHER BZP	100
FX/SPW/M5	M5 SHAKEPROOF WASHER BZP	100
FX/SPW/M6	M6 SHAKEPROOF WASHER BZP	100
FX/SPW/M8	M8 SHAKEPROOF WASHER BZP	100
FX/SPW/M10	M10 SHAKEPROOF WASHER BZP	100
FX/SPW/M12	M12 SHAKEPROOF WASHER BZP	100
FX/SPW/M16	M16 SHAKEPROOF WASHER BZP	100
FX/SPW/M20	M20 SHAKEPROOF WASHER BZP	100
FX/SPW/M25	M25 SHAKEPROOF WASHER BZP	100
FX/SPW/M32	M32 SHAKEPROOF WASHER BZP	100
FX/SPW/M40	M40 SHAKEPROOF WASHER BZP	100
FX/SPW/M50	M50 SHAKEPROOF WASHER BZP	100



Engineering Set Screws

- Hex Engineering Set Screw to Din 933
- Made from High Tensile Steel



TOP SELLER!

Part Number	Description	Pack Qty
FX/HB/M6/12/200	M6 x 12mm Hex Bolt BZP - High Tensile Steel - To DIN 933	200
FX/HB/M6/16/200	M6 x 16mm Hex Bolt BZP - High Tensile Steel - To DIN 933	200
FX/HB/M6/20/200	M6 x 20mm Hex Bolt BZP - High Tensile Steel - To DIN 933	200
FX/HB/M6/25/200	M6 x 25mm Hex Bolt BZP - High Tensile Steel - To DIN 933	200
FX/HB/M6/30/200	M6 x 30mm Hex Bolt BZP - High Tensile Steel - To DIN 933	200
FX/HB/M8/16/200	M8 x 16mm Hex Bolt BZP - High Tensile Steel - To DIN 933	200
FX/HB/M8/20/200	M8 x 20mm Hex Bolt BZP - High Tensile Steel - To DIN 933	200
FX/HB/M8/25/200	M8 x 25mm Hex Bolt BZP - High Tensile Steel - To DIN 933	200
FX/HB/M8/30/200	M8 x 30mm Hex Bolt BZP - High Tensile Steel - To DIN 933	200
FX/HB/M10/20/200	M10 x 20mm Hex Bolt BZP - High Tensile Steel - To DIN 933	200
FX/HB/M10/25/200	M10 x 25mm Hex Bolt BZP - High Tensile Steel - To DIN 933	200
FX/HB/M10/30/200	M10 x 30mm Hex Bolt BZP - High Tensile Steel - To DIN 933	200
FX/HB/M10/40/200	M10 x 40mm Hex Bolt BZP - High Tensile Steel - To DIN 933	200

TOP SELLER!

TOP SELLER!

Serrated Flange Nuts



Part Number	Description	Pack Qty
FX/FN/S/M6	M6 Serrated Nuts	100
FX/FN/S/M8	M8 Serrated Nuts	100
FX/FN/S/M10	M10 Serrated Nuts	100
FX/FN/S/M12	M12 Serrated Nuts	100
FX/FN/S/M16	M16 Serrated Nuts	100

Nuts

- Full Nuts to DIN 93
- Full Nut c/w serrated flange to DIN 6923



TOP SELLER!

TOP SELLER!

Part Number	Description	Pack Qty
FX/FN/M5/100	M5 Full Nut Hex. BZP to DIN 934 - High Tensile	100
FX/FN/M6/100	M6 Full Nut Hex. BZP to DIN 934 - High Tensile	100
FX/FN/M8/100	M8 Full Nut Hex. BZP to DIN 934 - High Tensile	100
FX/FN/M10/100	M10 Full Nut Hex. BZP to DIN 934 - High Tensile	100

Concrete Screw - BZP



Material: Steel
Usage: Suitable for fitting overhead installations and many substrates.
Substrate Applicable: Cracked concrete, non-cracked concrete, hollow core slabs and masonry.

Part Number	Description	Pack Qty
FX/CS/35/100	M8 / M10 - 35mm Thread	100
FX/CS/55/100	M8 / M10 - 55mm Thread	100

Channel Nuts - BZP

Standard: Conforms with BS 6946

Finish: Zinc & Clear

Part Number	Size	Pack Qty
FX/CN/P/M6/100	M6 Plain	100
FX/CN/P/M8/100	M8 Plain	100
FX/CN/P/M10/100	M10 Plain	100
FX/CN/P/M12/100	M12 Plain	100

▶ Plain



Part Number	Size	Pack Qty
FX/CN/SS/M6/100	M6 Short	100
FX/CN/SS/M8/100	M8 Short	100
FX/CN/SS/M10/100	M10 Short	100
FX/CN/SS/M12/100	M12 Short	100

▶ Short Spring



Part Number	Size	Pack Qty
FX/CN/LS/M6/100	M6 Long	100
FX/CN/LS/M8/100	M8 Long	100
FX/CN/LS/M10/100	M10 Long	100
FX/CN/LS/M12/100	M12 Long	100

▶ Long Spring



Hex Set Screw - Brass

• Standard: DIN 933

• Material: Brass

• Finish: Self Colour

Part Number	Description	Pack Qty
FX/BR/HB/M6/16/100	M6 x 16 DIN 933	100
FX/BR/HB/M6/20/100	M6 x 20 DIN 933	100
FX/BR/HB/M6/25/100	M6 x 25 DIN 933	100
FX/BR/HB/M6/30/100	M6 x 30 DIN 933	100
FX/BR/HB/M8/25/100	M8 x 25 DIN 933	100
FX/BR/HB/M8/30/100	M8 x 30 DIN 933	100
FX/BR/HB/M10/25/100	M10 x 25 DIN 933	100
FX/BR/HB/M10/30/100	M10 x 30 DIN 933	100
FX/BR/HB/M10/40/100	M10 x 40 DIN 933	100

TOP SELLER!



Full Nut - Brass

• Standard: DIN 934; BS3692

• Material: Brass

• Finish: Self Colour

Part Number	Description	Pack Qty
FX/BR/FN/M4/100	M4 DIN 934; BS3692	100
FX/BR/FN/M5/100	M5 DIN 934; BS3692	100
FX/BR/FN/M6/100	M6 DIN 934; BS3692	100
FX/BR/FN/M8/100	M8 DIN 934; BS3692	100
FX/BR/FN/M10/100	M10 DIN 934; BS3692	100

TOP SELLER!



Washer - Brass

• Standard: DIN 125; BS4320B (M4 BS4320A)

• Material: Brass

• Finish: Self Colour

Part Number	Description	Pack Qty
FX/BR/W/M4	M4 DIN 125; BS4320B (M4 BS4320A)	100
FX/BR/W/M6	M6 DIN 125; BS4320B (M4 BS4320A)	100
FX/BR/W/M8	M8 DIN 125; BS4320B (M4 BS4320A)	100
FX/BR/W/M10	M10 DIN 125; BS4320B (M4 BS4320A)	100

TOP SELLER!



Shield Anchor Bolts

Shield Bolts - Loose Type

- Suitable for heavy duty installations where the bolts have to be inserted after positioning the shield part of the fixing into the fixing hole, for example installing heavy floor standing machinery which has to be slid into position
- Comprises a segmented shield which expands when tightened
- Ideal for use in concrete, stone and brickwork

Part Number	Description	Pack Qty
FX/SLB/M6x60	Shield Loose Bolt M6 x 60mm complete with M6 Bolt	100
FX/SLB/M8x60	Shield Loose Bolt M8 x 60mm complete with M8 Bolt	100
FX/SLB/M10x65	Shield Loose Bolt M10 x 65mm complete with M10 Bolt	100

Shield Bolts - Eyelet Type

- Suitable for permanent anchorage of guy ropes, stays, cables etc.
- Comprises a segmented shield which expands when tightened
- Ideal for use in concrete, stone and brickwork

Part Number	Description	Pack Qty
FX/SEB/M8x55	Shield Eye Bolt M8 x 55mm complete with Eyelet Bolt	100
FX/SEB/M10x65	Shield Eye Bolt M10 x 65mm complete with Eyelet Bolt	100

Shield Bolts - Projector Type

- Suitable for installations where there is a need to support the weight of the fixture during installation, for example distribution boards, cable tray, ducting etc
- Comprises a segmented shield which expands when tightened
- Ideal for use in concrete, stone and brickwork

Part Number	Description	Pack Qty
FX/SPB/M8x55	Shield Projector Bolt M8 x 55mm c/w M8 Nut	100
FX/SPB/M10x65	Shield Projector Bolt M10 x 65mm c/w M10 Nut	100

Wedge Drop - In Anchor ZY

- Material: Steel
 Usage: Medium duty internal thread
 Application: Ideal for suspension of cable tray, ductwork
 Substrate Applicable: Concrete - Limited suitability in stone and solid brickwork

Part Number	Description	Length (b)	Pack Qty
FX/WDA/M6/25/100	M6	25mm	100
FX/WDA/M8/30/100	M8	30mm	100
FX/WDA/M10/40/50	M10	40mm	50
FX/WDA/M12/50/50	M12	50mm	50

Setting Tool BZP

- Material: Steel
 Usage: To use with wedge drop-in anchors

Part Number	Description	Pack Qty
FX/WDA/M6/IT/1	M6	1
FX/WDA/M8/IT/1	M8	1
FX/WDA/M10/IT/1	M10	1
FX/WDA/M12/IT/1	M12	1

Wire Hanger ZY

- Material: Steel
 Usage: To use with wedge drop-in anchors.
 Application: Suspended ceilings, catenary / suspension wire
 Substrate Applicable: Concrete, Stone and solid brickwork

Part Number	Description	Length (b)	Pack Qty
FX/WDA/WH/M6/60/100	M6 x 60	60mm	100

Folded Eye Bolt - BZP

Part Number	Description	Pack Qty
FX/FEB/M6	Folded Eye Bolt BZP M6 X 80	100
FX/FEB/M8	Folded Eye Bolt BZP M8 X 80	100
FX/FEB/M10	Folded Eye Bolt BZP M10 X 80	100



Wedge Nut

Part Number	Description	Pack Qty
WN/M6	M6 Wedge Nut (V Nut)	100
WN/M8	M8 Wedge Nut (V Nut)	100
WN/M10	M10 Wedge Nut (V Nut)	100
WN/M12	M12 Wedge Nut (V Nut)	100
MWN/M6	M6 Mini Wedge Nut (Square Corner)	100
MNW/M8	M8 Mini Wedge Nut (Square Corner)	100



Draw Tape

- Nylon and Metal Draw Tapes
- Usage: Pulling cables through pipe
 Material: 3mm Nylon with brass eyelet

Part Number	Description	Pack Qty
DT/N/10	Nylon Draw Tape with Brass Eyelet - 10m	1
DT/N/20	Nylon Draw Tape with Brass Eyelet - 20m	1
DT/N/30	Nylon Draw Tape with Brass Eyelet - 30m	1



Cable Pull Lubricant Wax Based

- Material: Wax Emulsion
 Finish: Yellow Paste
 Usage: Used to lubricate cable for pulling through conduit

Part Number	Description	Colour	Pack Qty
AC/CPL/500/1	500ml	Yellow	1



Shop Online!

Visit our website to see our full range of products

www.cobracable.co.uk



Threaded Rod End Cap Flex PVC



Material: Soft PVC (like rubber)
Usage: Protect threaded rod ends

Part Number	Description	Colour	Pack Qty
SA/REC/8/BLACK	M8	Black	100
SA/REC/10/BLACK	M10	Black	100

Threaded Rod End Cap Flex PVC



Part Number	Tamlex	Unistrut	Description	Pack Qty
SA/WBC/21/1	TB256-21	P1796-A	21mm	1
SA/WBC/41/1	TB256-41	P1796	41mm	1
SA/WBC/82/1	TB256-82	P1796-B	82mm	1

Cone Point Screws Included

Stand Off Bracket



Part Number	Description	Pack Qty
SOB/50	50mm Stand Off Bracket	1
SOB/75	75mm Stand Off Bracket	1
SOB/100	100mm Stand Off Bracket	1
SOB/150	150mm Stand Off Bracket	1
SOB/225	225mm Stand Off Bracket	1
SOB/300	300mm Stand Off Bracket	1

Top Hat Bracket



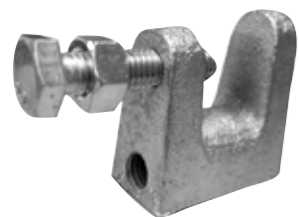
Part Number	Description	Pack Qty
THB/50	Top Hat Bracket 50mm + Cage Nut	1
THB/75	Top Hat Bracket 75mm + Cage Nut	1
THB/100	Top Hat Bracket 100mm + Cage Nut	1
THB/150	Top Hat Bracket 150mm + Cage Nut	1
THB/225	Top Hat Bracket 225mm + Cage Nut	1
THB/300	Top Hat Bracket 300mm + Cage Nut	1

Bossed Back Plate



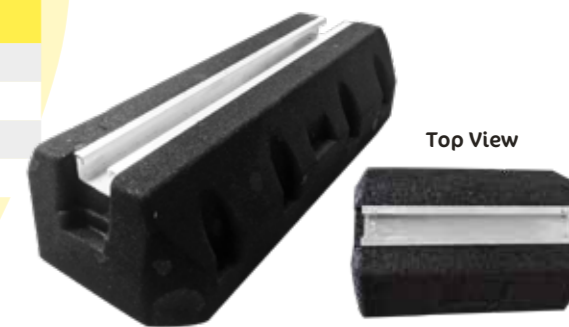
Part Number	Description	Pack Qty
BBP/M8	Bossed Back Plate BZP M8	1
BBP/M10	Bossed Back Plate BZP M10	1
BBP/M8M10	Bossed Back Plate BZP M8m10 Duel	1

Beam Clamps Galv



Part Number	Britclip	Unistrut	Description	Pack Qty
SA/BC/M8/ROD	HFL2/M8	FL18T	Threaded for M8 Rod	1
SA/BC/M8/9DIA	HFL2/M9	FL18P	For M8 Rod Ø 9mm	1
SA/BC/M10/ROD	HFL2/M10	FL201T	Threaded for M10 Rod	1
SA/BC/M10/11DIA	HFL2/M11	FL201P	For M10 Rod Ø 11mm	1

SF Foot Rubber



Top View

H - Frame Kit (Strut Not Included)

- 2 x 305 x 305mm Feet / 2 x 500 x 500mm Feet
- 2 x 90° Angle Brackets HDG
- 4 x M10 x 25 Hex Set Screws HDG
- 4 x M10 Flat Washers HDG
- 4 x M10 Channel Nuts HDG
- No Penetration of waterproof roof membrane
- Anti-vibration pads attached

Part Number	Description	Pack Qty
RM/HF/305/KIT	305mm H Frame Kit	1
RM/HF/500/KIT	500mm H Frame Kit	1



Cantilever Arm - Galv

Standard: BS 6946
Finish: Hot Dipped Galv

Part Number	Tamlex	Unistrut	Description	Pack Qty
SA/CA/150/1	TC103-15	P2663/150	150mm	1
SA/CA/300/1	TC103-30	P2663/300	300mm	1
SA/CA/450/1	TC103-45	P2663/450	450mm	1
SA/CA/600/1	TC103-60	P2663/600	600mm	1
SA/CA/750/1	TC103-75	P2663/750	750mm	1
SA/CA/900/1	TC103-90	P2663/900	900mm	1



Channel End Caps

Part Number	Tamlex	Unistrut	Description	Colour	Pack Qty
SA/CEC/21/BLACK/100	TA102B	139 21 97	21mm	Black	100
SA/CEC/21/WHITE/100	TA102	139 21 96	21mm	White	100
SA/CEC/41/BLACK/100	TA101B	139 41 97	41mm	Black	100
SA/CEC/41/WHITE/100	TA101	139 41 96	41mm	White	100



1% Online Discount

www.cobracable.co.uk - Order now with the QR code

1% Online Discount

www.cobracable.co.uk - Order now with the QR code

Holesaws

Part Number	Description	Pack Qty	Part Number	Description	Pack Qty
HS AW16	16mm Holesaw	1	HS AW70	70mm Holesaw	1
HS AW20	20mm Holesaw	1	HS AW73	73mm Holesaw	1
HS AW22	22mm Holesaw	1	HS AW76	76mm Holesaw	1
HS AW25	25mm Holesaw	1	HS AW79	79mm Holesaw	1
HS AW27	27mm Holesaw	1	HS AW83	83mm Holesaw	1
HS AW32	32mm Holesaw	1	HS AW86	86mm Holesaw	1
HS AW38	38mm Holesaw	1	HS AW89	89mm Holesaw	1
HS AW40	40mm Holesaw	1	HS AW92	92mm Holesaw	1
HS AW44	44mm Holesaw	1	HS AW95	95mm Holesaw	1
HS AW51	51mm Holesaw	1	HS AW102	102mm Holesaw	1
HS AW54	54mm Holesaw	1	HS AW105	105mm Holesaw	1
HS AW60	60mm Holesaw	1	HS AW111	111mm Holesaw	1
HS AW64	64mm Holesaw	1	HS AW127	127mm Holesaw	1
HS AW65	65mm Holesaw	1	HS AW152	152mm Holesaw	1
HS AW67	67mm Holesaw	1			



Arbours



Part Number	Description	Pack Qty
L/ARBOUR	Large Arbours	1
S/ARBOUR	Small Arbours	1

Auger Wood Bit SDS Shank



Part Number	Description	Pack Qty
WD/SDS/20/235	Auger Wood Bit SDS Shank - 25x 235	1
WD/SDS/25/235	Auger Wood Bit SDS Shank - 20 x 235	1

Auger Wood Bit - Hex Shank

Part Number	Description	Pack Qty
WD/HS/6/235	Auger Wood Bit - Hex Shank - 6.0 x 235	1
WD/HS/8/235	Auger Wood Bit - Hex Shank - 8.0 x 235	1
WD/HS/10/235	Auger Wood Bit - Hex Shank - 10.0 x 235	1
WD/HS/12/235	Auger Wood Bit - Hex Shank - 12.0 x 235	1
WD/HS/16/235	Auger Wood Bit - Hex Shank - 16.0 x 235	1
WD/HS/20/235	Auger Wood Bit - Hex Shank - 20.0 x 235	1
WD/HS/20/400	Auger Wood Bit - Hex Shank - 20.0 x 400	1
WD/HS/22/235	Auger Wood Bit - Hex Shank - 22.0 x 235	1
WD/HS/25/235	Auger Wood Bit - Hex Shank - 25.0 x 235	1
WD/HS/25/400	Auger Wood Bit - Hex Shank - 25.0 x 400	1
WD/HS/32/235	Auger Wood Bit - Hex Shank - 32.0 x 235	1



Masonry Drill Bit

Part Number	Description	Pack Qty
MDS/M5/85	Masonry Drill Bit M5 X 85	1
MDS/M5.5/85	Masonry Drill Bit M5.5 X 85	1
MDS/M5/150	Masonry Drill Bit M5 X 150	1
MDS/M5.5/150	Masonry Drill Bit M5.5 X 150	1
MDS/M6/100	Masonry Drill Bit M6 X 100	1
MDS/M6/150	Masonry Drill Bit M6 X 150	1
MDS/M6.5/100	Masonry Drill Bit M6.5 X 100	1
MDS/M6.5/150	Masonry Drill Bit M6.5 X 150	1
MDS/M7/100	Masonry Drill Bit M7 X 100	1
MDS/M7/150	Masonry Drill Bit M7 X 150	1
MDS/M8/120	Masonry Drill Bit M8 X 120	1
MDS/M8/150	Masonry Drill Bit M8 X 150	1
MDS/M8/400	Masonry Drill Bit M8 X 400	1
MDS/M10/120	Masonry Drill Bit M10 X 120	1
MDS/M10/150	Masonry Drill Bit M10 X 150	1
MDS/M10/400	Masonry Drill Bit M10 X 400	1
MDS/M12/150	Masonry Drill Bit M12 X 150	1
MDS/M12/400	Masonry Drill Bit M12 X 400	1
MDS/M14/400	Masonry Drill Bit M14 X 400	1
MDS/M16/400	Masonry Drill Bit M16 X 400	1
MDS/M20/400	Masonry Drill Bit M20 X 400	1
MDS/M22/400	Masonry Drill Bit M22 X 400	1
MDS/M25/400	Masonry Drill Bit M25 X 400	1



1% Online Discount



www.cobracable.co.uk - Order now with the QR code

1% Online Discount



www.cobracable.co.uk - Order now with the QR code

Part Number	Description	Pack Qty	Part Number	Description	Pack Qty
SDS/M4/110	SDS Drill Bit M4x110mm	1	SDS/M12/600	SDS Drill Bit M12x600mm	1
SDS/M4/160	SDS Drill Bit M4x160mm	1	SDS/M12/1000	SDS Drill Bit M12x1000mm	1
SDS/M5/110	SDS Drill Bit M5x110mm	1	SDS/M14/160	SDS Drill Bit M14x160mm	1
SDS/M5/160	SDS Drill Bit M5x160mm	1	SDS/M14/210	SDS Drill Bit M14x210mm	1
SDS/M5.5/110	SDS Drill Bit M5.5x110mm	1	SDS/M14/260	SDS Drill Bit M14x260mm	1
SDS/M5.5/160	SDS Drill Bit M5.5x160mm	1	SDS/M14/460	SDS Drill Bit M14x460mm	1
SDS/M6/110	SDS Drill Bit M6x110mm	1	SDS/M15/160	SDS Drill Bit M15x160mm	1
SDS/M6/160	SDS Drill Bit M6x160mm	1	SDS/M15/260	SDS Drill Bit M15x260mm	1
SDS/M6.5/110	SDS Drill Bit M6.5x110mm	1	SDS/M16/160	SDS Drill Bit M16x160mm	1
SDS/M6.5/160	SDS Drill Bit M6.5x160mm	1	SDS/M16/210	SDS Drill Bit M16x210mm	1
SDS/M6.5/210	SDS Drill Bit M6.5x210mm	1	SDS/M16/250	SDS Drill Bit M16x250mm	1
SDS/M7/110	SDS Drill Bit M7x110mm	1	SDS/M16/460	SDS Drill Bit M16x460mm	1
SDS/M7/160	SDS Drill Bit M7x160mm	1	SDS/M16/600	SDS Drill Bit M16x600mm	1
SDS/M7/210	SDS Drill Bit M7x210mm	1	SDS/M16/1000	SDS Drill Bit M16x1000mm	1
SDS/M8/110	SDS Drill Bit M8x110mm	1	SDS/M18/210	SDS Drill Bit M18x210mm	1
SDS/M8/160	SDS Drill Bit M8x160mm	1	SDS/M18/460	SDS Drill Bit M18 X 460mm	1
SDS/M8/210	SDS Drill Bit M8x210mm	1	SDS/M20/200	SDS Drill Bit M20 X 200mm	1
SDS/M8/260	SDS Drill Bit M8x260mm	1	SDS/M20/260	SDS Drill Bit M20x260mm	1
SDS/M8/460	SDS Drill Bit M8x460mm	1	SDS/M20/460	SDS Drill Bit M20x460mm	1
SDS/M10/110	SDS Drill Bit M10x110mm	1	SDS/M20/600	SDS Drill Bit M20x600mm	1
SDS/M10/160	SDS Drill Bit M10x160mm	1	SDS/M20/1000	SDS Drill Bit M20x1000mm	1
SDS/M10/210	SDS Drill Bit M10x210mm	1	SDS/M22/260	SDS Drill Bit M22x260mm	1
SDS/M10/260	SDS Drill Bit M10x260mm	1	SDS/M22/450	SDS Drill Bit M22x450mm	1
SDS/M10/450	SDS Drill Bit M10x450mm	1	SDS/M24/450	SDS Drill Bit M24x450mm	1
SDS/M10/600	SDS Drill Bit M10x600mm	1	SDS/M25/250	SDS Drill Bit M25x250mm	1
SDS/M12/160	SDS Drill Bit M12x160mm	1	SDS/M25/450	SDS Drill Bit M25x450mm	1
SDS/M12/210	SDS Drill Bit M12x210mm	1	SDS/M25/600	SDS Drill Bit M25x600mm	1
SDS/M12/260	SDS Drill Bit M12x260mm	1	SDS/M25/1000	SDS Drill Bit M25x1000mm	1
SDS/M12/460	SDS Drill Bit M12x460mm	1			

Part Number	Description	Pack Qty
WD/FWB/10/150	Flat Wood Bit 10mmx150mm	1
WD/FWB/13/150	Flat Wood Bit 13mmx150mm	1
WD/FWB/16/150	Flat Wood Bit 16mmx150mm	1
WD/FWB/20/150	Flat Wood Bit 20mmx150mm	1
WD/FWB/22/150	Flat Wood Bit 22mmx150mm	1
WD/FWB/25/150	Flat Wood Bit 25mmx150mm	1
WD/FWB/32/150	Flat Wood Bit 32mmx150mm	1
WD/FWB/38/150	Flat Wood Bit 38mmx150mm	1



Shop Online!

Visit our website to see our full range of products

www.cobracable.co.uk



1% Online Discount

www.cobracable.co.uk - Order now with the QR code

1% Online Discount

www.cobracable.co.uk - Order now with the QR code

Warning Labels



Part Number	Description	Pack Qty
SL/IBO/7525/250	Isolate Before Open Vinyl Self Adhesive - 75mm x 25mm (250 per roll)	1
SL/IBO/7525/25	Isolate Before Open Vinyl Self Adhesive - 75mm x 75mm (25 per roll)	1
SL/EC/7525/25	Electrical Connection Vinyl Self Adhesive - 75mm x 25mm (25 per roll)	1
SL/EC/7575/25	Electrical Connection Vinyl Self Adhesive - 75mm x 75mm (25 per roll)	1
SL/HC/7575/5	Harmonised Cable Vinyl Self Adhesive - 75mm x 75mm (5 per roll)	1
SL/HC/7575/25	Harmonised Cable Vinyl Self Adhesive - 75mm x 75mm (25 per roll)	1
SL/DHV/7525/25	Danger High Voltage Vinyl Self Adhesive - 75mm x 25mm (25 per roll)	1
SL/PI/7575/25	Periodic Inspection Vinyl Self Adhesive - 75mm x 75mm (25 per roll)	1
SL/MC/7575/5	Mixed Cable Vinyl Self Adhesive - 75mm x 75mm (5 per roll)	1
SL/MC/7575/25	Mixed Cable Vinyl Self Adhesive - 75mm x 75mm (25 per roll)	1
SL/RCD/7575/25	RCD Test Vinyl Self Adhesive - 75mm x 25mm (25 per roll)	1
SL/D230/7525/25	Danger 230V Vinyl Self Adhesive - 75mm x 25mm (25 per roll)	1
SL/D230/7525/250	Danger 230V Vinyl Self Adhesive - 75mm x 25mm (250 per roll)	1
SL/D230/7575/25	Danger 230V Vinyl Self Adhesive - 75mm x 75mm (25 per roll)	1
SL/D400/7525/25	Danger 400V Vinyl Self Adhesive - 75mm x 25mm (25 per roll)	1
SL/D400/7525/250	Danger 400V Vinyl Self Adhesive - 75mm x 25mm (250 per roll)	1
SL/D400/7575/25	Danger 400V Vinyl Self Adhesive - 75mm x 75mm (25 per roll)	1
SL/TEST/500	Tested (45 x 35) Paper (500 per roll)	1

Scaffold & Ladder Tags



SL/SCAF/TAG SL/LAD/TAG

Part Number	Description	Pack Qty
SL/SCAF/TAG	Contains 10 x Tags, 10 x Cards & 1 Permanent Pen	1
SL/LAD/TAG	Contains 10 x Tags, 10 x Cards & 1 Permanent Pen	1

Multi-Purpose Wipes

Usage: Hard to tear absorbent wipe to clean hands and surfaces of industrial contaminants & protect against bacteria. Also contains lanolin moisturiser for hand conditioning
Standards: Conforms to BSEN 1276:1997 & BS EN 12954:1995
Size: 245 x 196mm per wipe (box qty 110)



Part Number	Description	Pack Qty
AC/HW/1	Tub of 110 Wipes - 245 x 196mm	1

Rubble Sacks

Material: Heavy Duty Polythene
Size: 21" x 32" & 20" x 30"



Part Number	Description	Pack Qty
AC/RS/6	21" x 32" - Pack of 6	1
AC/RS/100	20" x 30" - Box of 100	100

Dust Sheets

Material: Absorbent 100% Cotton Twill
Size: Polythene



Part Number	Description	Pack Qty
AC/DS/COTTON	Cotton Twill - size 12" x 9"	1
AC/DS/COTTON/POLY	Cotton with Laminated Polythene back - size 12" x 9"	1
AC/DS/POLY	Polythene - size 12" x 9"	20

Cable Jacks

Part Number	Description	Pack Qty
AC/CJ/3T/PAIR	Pair of 3 Tonne Cable Jacks	1



Gripbond / Saves Nails



Usage: Fast bonding adhesive with gap filling properties
 Cure Time: 48 hours depending on thickness and temperature
 Info: Solvent-free

Part Number	Description	Pack Qty
SavesNails/310ml	310ml	1

Pro Multi-use Silicone



Usage: Advanced Modified Polymer Adhesive & Sealant. Conforms to EN15651-1, F INT.
 • For interior and exterior applications in all weather conditions.
 • Remains permanently flexible.
 • Can be over-painted with water
 • Resistant to UV radiation, water (including seawater), mould and chlorine.
 • Excellent adhesion to most surfaces (even moist surfaces).
 • Wet on wet surface application.
 Application: A universal, waterproof, construction adhesive and sealer.

Part Number	Description	Pack Qty
Pro/Multi/Sil/White	White	1

Flexible Fillers



Usage: Good Adhesion to most materials, ideal for sealing joints and repairing cracks.
 Cure Time: 24 Hours depending on thickness and temperature (use above 5°C)

Part Number	Description	Pack Qty
Dec/Filler	Decorators Filler M19 - Standard 310ml	1
Fire/Filler	Fire Rated Dec Filler 310ml	1

Super Glues



Usage: The high viscosity & strength means it can be used on porous & vertical surfaces
 Materials: PVCu, rubbers, timbers & many plastics
 Cure Time: Very quick and high initial grab

Part Number	Description	Pack Qty
SuperGlue/S	20g	1
SuperGlue/50g	50g	1

Silicone Sealants

Usage: Sealing & Waterproofing in areas of high humidity.
 Cure Time: Tack < 30 minutes; full cure 3-6mm per day.

Part Number	Description	Colour	Pack Qty
Sil/Con/Br	300ml	Brown	1
Sil/Con/B	300ml	Black	1
Sil/Con/Clear	300ml	Clear	1
Sil/Con/Grey	300ml	Grey	1
Sil/Con/White	300ml	White	1



Expanding Foam

Usage: CFC-free propellant self-expanding ready-to-use Polyurethane foam.
 Cure Time: 90 minutes for a 30mm bead.

Part Number	Description	Pack Qty
Exp/Foam/750	750ml B3	1
Exp/Fire/Foam/750	750ml B1	1

B1	Difficult to ignite
B3	Easily Ignited



Fire Rated Silicone

Usage: Maintains the integrity of fire walls when breached by conduits, pipes, etc.
 High movement and halogen free.
 Standard: 4 hours tested to ISO 834 & to BS 476, Part 22

Part Number	Description	Pack Qty
Fire/Rated/Sil	310ml	1



Lightweight Fillers

Usage: White paste for filling large holes and general repair both internally and externally
 Materials: Plaster, concrete, brick, wood & stone.
 Quick-drying, Mould and sound-resistant

Part Number	Description	Pack Qty
LW/Fil/500	500ml	1
LW/Fil/1Ltr	1Ltr	1



A

Adaptable Boxes - Galvanised Steel 49
 Adaptable Boxes - PVC 49
 Adaptors - Brass Nickel Plated - Fixed and Swivel 48
 All Round Banding 12
 Angle Box 50
 Arbours 70
 Auger Wood Bit - Hex Shank 71
 Auger Wood Bit SDS Shank 70

B

Back Outlet Box 51
 Beam Clamps Galv 68
 Bossed Back Plate 68
 Box Lid Cover 52
 Box Mounting Brackets (Telescopic) 12
 Brass Earthing Nut 39
 Brass Locknut 41
 Brazed 4-Hole Cable Lugs (Transformer) 32
 Bulk Discount Prices 4

C

Cable Cleats 7
 Cable Guard 60
 Cable Hanger / Cable Run Clip 44
 Cable Jacks 75
 Cable Protector 60
 Cable Pull Lubricant Wax Based 67
 Cable Run Adapter 44
 Cable Spooler 60
 Cable Tie - Cable Mounts 7
 Cable Tie - Fixing Bolt 7
 Cable Tie - Self Adhesive Square Bases 7
 Cable Tie Fixings 7
 Cable Tie Tools 8
 Cantilever Arm - Galv 69
 Capping / Washered Nails 61
 Catenary Wire and Accessories 54
 Ceiling Clip 45

Channel Drive Over Cable Protector 60
 Channel End Caps 69
 Channel Nuts - BZP 65
 CobraTubs 11
 Combi Tray Bolt 59
 Concrete Screw - BZP 64
 Conduit Bender & Accessories 47
 Conduit Box Screws, Nuts and Washers - Brass 61
 Connector Box with Fittings (Choc Box) 56
 Contained Palm Lugs 30, 31
 Contractor Packs - PVC 48
 Crimping Tool 15
 Crimping Tools 35

D

DC Rotary Isolators (Solar) 15
 Distance Saddle 51
 Dovetail Cable Hanger 45
 Draw Tape 67
 Dry Lining Boxes 13
 Duogel 49
 Dust Sheets 75

E

Earth Bar and Disconnection Links 43
 Earth Clamps 40
 Earth Rod and Accessories 40
 Earth Terminals 56
 Engineering Set Screws 64
 Expanding Foam 77

F

FFemale Bush 41
 Fibreglass Step 46
 Fibreglass Step Ladder Treads 46
 Fire Putty Boxes 12
 Fire Rated Silicone 77
 Fire Retardant Clips and Fixings 38
 Fire Retardant Clips and Fixings 38
 Flat Wood Bit 73

Flexible Conduit - Galvanised - PVC Coated 48
 Flexible Fillers 76
 Folded Eye Bolt - BZP 67
 Full Nut - Brass 65

G

Gaffer / Duct Tape 57
 Galv Coupler 53
 Galvanised Lock Nut 52
 Galvanised Spray 58
 Girder Clip 45
 Grade (316) Stainless Steel Lugs 33
 Gripbond / Saves Nails 76
 Grommet Strip 58
 Grommets 58

H

H - Frame Kit 69
 Hex Key Wrench for Earth Nuts 39
 Hex Set Screw - Brass 65
 Hole (2) Cable Lugs 16mm 31
 Hole Centres 31
 Holesaws 70
 Hottest Products 5
 Hydraulic Crimping Tools 22, 23, 24, 25

I

Inline Cable Joining Kit 51
 Inspection Bend & Elbow 53
 Inspection Tee 53
 Insulated Connection Boxes 56
 Insulated Terminals 19, 20, 21
 Interlocking Switch 17
 Intersection Box 50
 IP67 Plug & Connector Range Red and Blue 17

J

Jack Chain 54

K

Knock In Metal Clips 7

L

Ladder Clamp 46
 Large Male Bush 41
 Lattice Earth Mat 40
 Lever Connectors 55
 Lever Connectors Quick Connection 55
 Light Hanger 45
 Lightweight Fillers 77
 Line Markers 58
 Lock Ring 52
 Lockout Essential Kit 60

M

Masonry Drill Bit 71
 Metal Clad Boxes 13
 Metal Cutting Compound 47
 Metal Round Cable Clips 9
 Metal Wall Plugs 38
 Meter Tail Gland Kits 10
 Multi-Purpose Wipes 75

N

Nipple 52
 Nuts 64
 Nylon Cable Ties 6
 Nylon Dome - Top Glands 10

O

Outdoor Switched Sockets 18

P

Panel Mounts 17
 Plain Earth Bar 42
 Plasterboard Fixings 59
 Plastic Flat Cable Clips Twin & Earth 9
 Plastic Round Cable Clips 9
 Porcelain Connectors 56
 Pozi Countersunk Woodscrew - Twinthread - BZP 62
 Pozi, Hex & Pan Drill Screw Shallow Head 62
 Pro Multi-use Silicone 76
 Purlin Clip 44
 Push In Connectors 55

Push Wire & Lever Connector Kit 55
 PVC - U Conduit Solvent 60
 Cement 60
 PVC Insulation Tape 57

R

Reducer 52
 Rod Connectors 53
 Rod Hanger 45
 Roofing Bolts & Nuts 59
 Rotary Isolators 14
 Rubble Sacks 75

S

Scaffold & Ladder Tags 74
 SDS Drill Bit 72
 Self-Amalgamating Tape 57
 Serrated Flange Nuts 64
 Setting Tool BZP 66
 SF Foot Rubber 69
 Shakeproof Washer - BZP 63
 Shield Bolts - Eyelet Type 66
 Shield Bolts - Loose Type 66
 Shield Bolts - Projector Type 66
 Short Male Bush 41
 Silicone Sealants 77
 Sleeving 36
 Socket Screws & Extension Stud (3.5mm) 61
 Soft Skin / Fire Clips 37
 Solar Branch Connector 15
 Solar Connector Spanner 15
 Solar Warning Labels 15
 Solid Copper Lug 45 Degree Bend 28, 29
 Solid Copper Lug 90 Degree Bend 26, 27
 Solid Copper Lugs and Butt Splices 34, 35
 Speed Fix 16
 Speed Fix Coupler 16
 Splitter 16
 Spring Toggle 59
 Stainless Steel Cable Ties and Fixings 8
 Stainless Steel Fixing Kits 8
 Stand Off Bracket 68

Steel Flexible Conduit - Galvanised 48
 Steel Space Bar Saddles Coated 38
 Stock & Die Sets 47
 Super Glues 76
 SWA BW Industrial Glands 39
 SWA CW Industrial Glands 39
 Switch and Socket Boxes 12

T

Tee Box 50
 Terminal Box 50
 Terminal Earth Blocks 56
 Terminal Strips 55
 Terminal with Back Outlet 51
 Testers 49
 Threaded Rod End Cap Flex PVC 68
 Through Box 50
 Top Hat Bracket 68
 TRS Glands 39
 Twin Through Box 51

U

U-Box 50
 Underground Warning Tape 57

W

Wall Plugs 62
 Wall Socket 16
 Warning Labels 74
 Washer - Brass 65
 Washers (Penny, Steel & Square) 63
 Weatherproof Empty Enclosures 18
 Weatherproof Fused Spur Switch 18
 Weatherproof RCD Switch 18
 Weatherproof Switches 18
 Wedge Drop - In Anchor ZY 66
 Wedge Nut 67
 Wire Hanger ZY 66

Y

Y Box 51



*“Cobra Cable Management Ltd is dedicated to offering outstanding service levels exclusively to the electrical wholesale industry and supplying **high quality** consumable products which are always **readily available** and supplied at the **right price.**”*

ALL COLLECTIONS BY APPOINTMENT ONLY

Contact us today:

- Phone:** 0121 794 8222
- Fax:** 0121 794 8223
- Freephone:** 0800 368 7422
- Email:** sales@cobracable.co.uk
- www.cobracable.co.uk**

To view our full range of product scan the QR Code below

